

Health Equity

Social Determinants of Health

Addressing the Social Determinants of Health through the Life Course

Lorena Zimmer, M.A.
Health Equity Coordinator
Center for Health Living

Lorena.Zimmer@state.co.us

on behalf of the PSD - Social Determinants of Health
Workgroup

Social Determinants of Health Workgroup



http://www.unnaturalcauses.org/video_clips_detail.php?res_id=80

Training Objectives

1. Increase knowledge of the Social Determinants of Health (SDoH) model
2. Understand the role of public health in addressing the SDoH
3. Identify opportunities to incorporate the SDoH model in program planning and implementation

Social Determinants of Health Definition

“Social determinants of health are life-enhancing resources, such as food supply, housing, economic and social relationships, transportation, education and health care, whose distribution across populations effectively determines length and quality of life.”

S. A. James in *Promoting Health Equity: A Resource to Help Communities Address Social Determinants of Health*, CDC, 2008

How Does it Differ From Health Disparities?

Health Disparities - Difference in incidence and prevalence of health conditions and health status between groups

- Disparity is only a descriptive statistical term
- It defines the difference among groups and populations
- It's a distant measure of outcomes
- Provides no explanation for the root cause of this difference
- Provides no insight into potential intervention

From presentation by Jeff Goldhagen, MD, at University of Florida



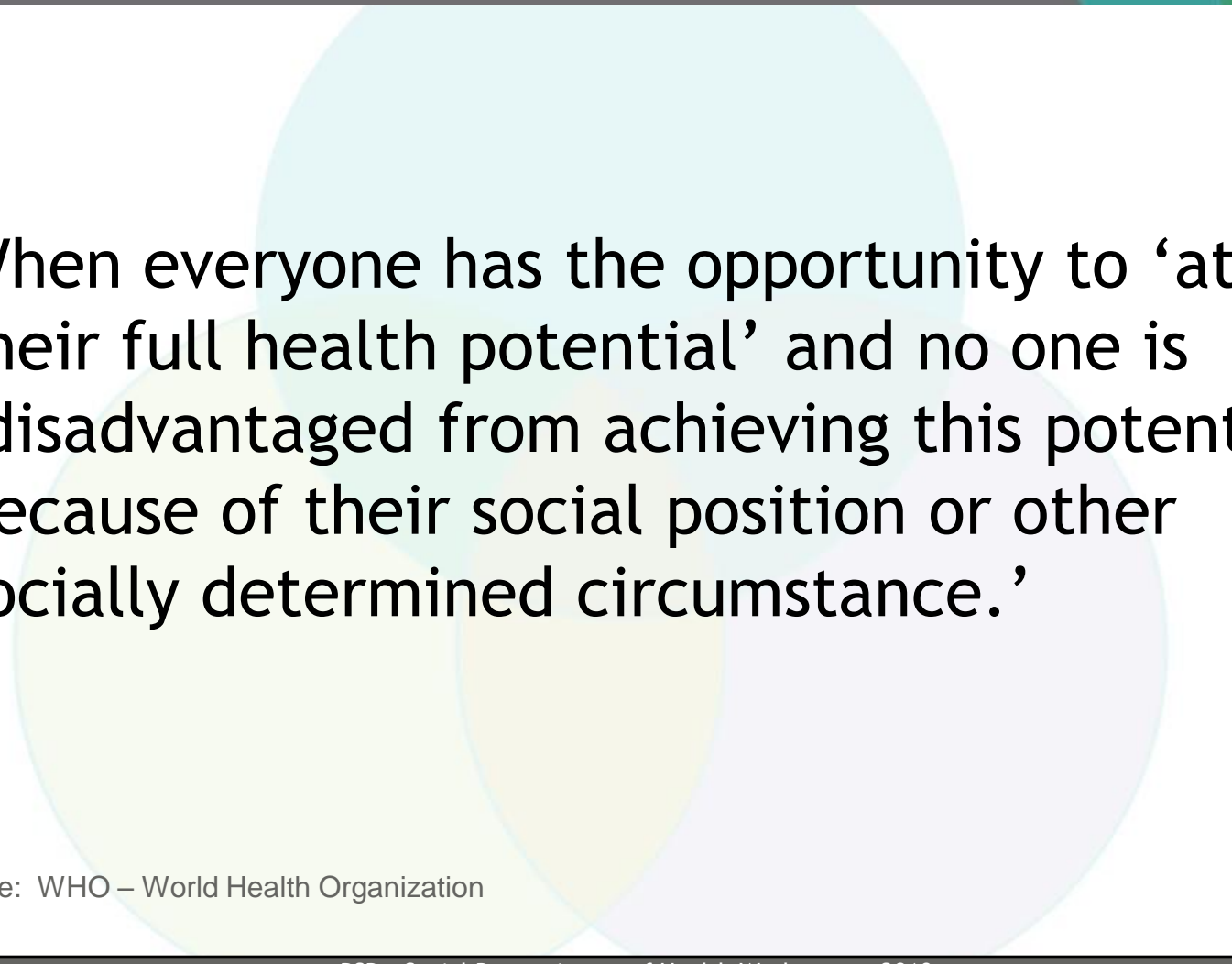
...“Despite increased attention to health disparities at the national, state, and community levels, relatively little progress has been made in achieving the vision of the Healthy People 2010 initiative of eliminating racial and ethnic health disparities by 2010.”

From Racial and Ethnic Health Disparities in Colorado 2009, CDPHE

Health Equity Definition



When everyone has the opportunity to ‘attain their full health potential’ and no one is ‘disadvantaged from achieving this potential because of their social position or other socially determined circumstance.’



Source: WHO – World Health Organization

Social Determinants of Health

According to the World Health Organization the public health system has 3 obligations in confronting inequity

1. To take the lead in encouraging a wider and more strategic approach to developing healthy public policies to promote health equity and social justice
2. To ensure resources are distributed between areas in proportion to their relative needs
3. To respond appropriately to the health care needs of different social groups

Source: WHO – World Health Organization

Social Determinants of Health

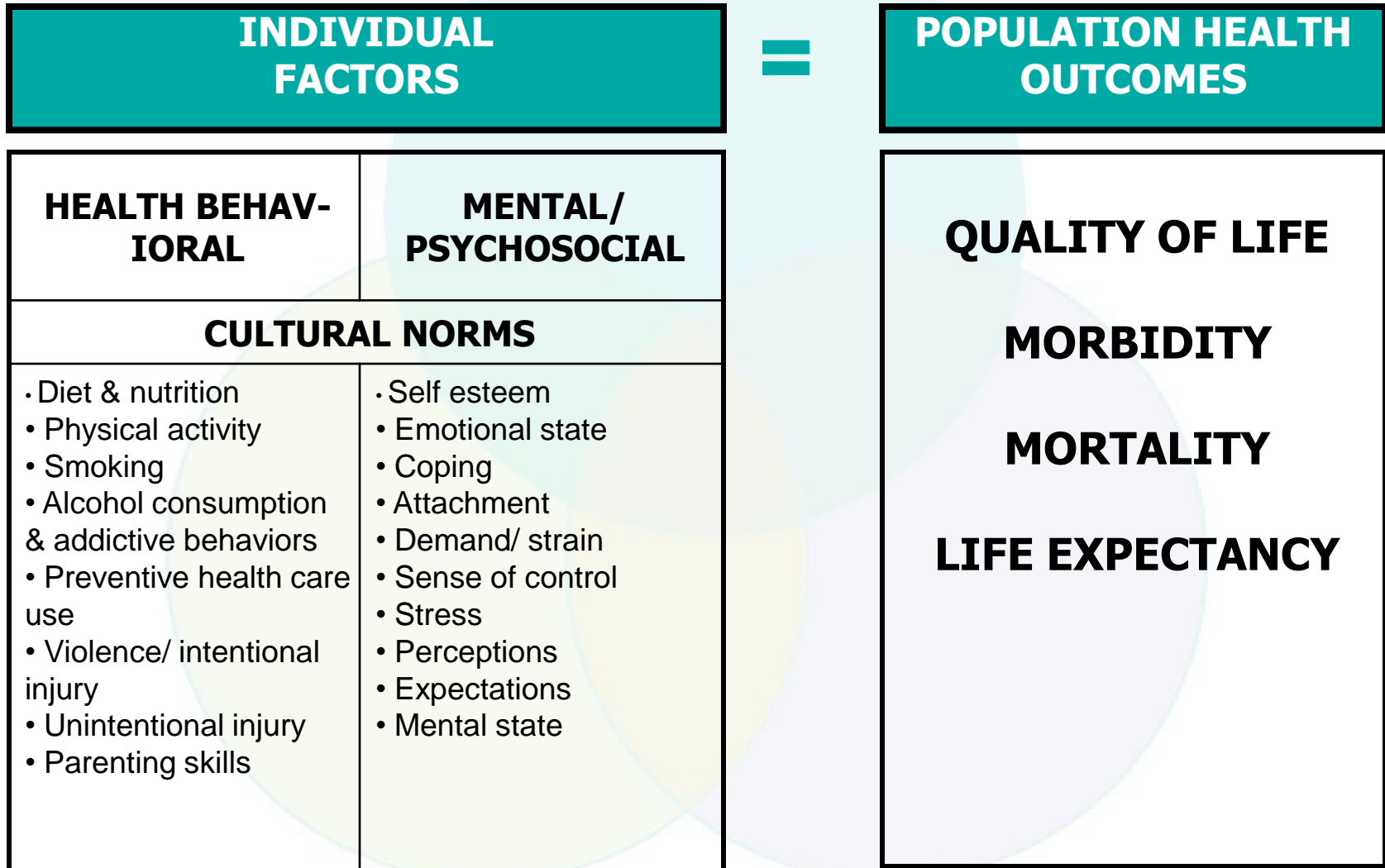
The Framework



Social Determinants of Health

**NATIONAL INFLUENCES
GOVERNMENT POLICIES
CULTURES**

Social Determinants of Health



Social Determinants of Health

Compared to other industrialized countries, where does the U.S. rank in smoking prevalence?

- A. #1 (highest smoking rates)
- B. Top 5
- C. Top 10
- D. 11-20th place
- E. Below 25th Place (lowest smoking rates)

Source: www.unnaturalcauses.org

Social Determinants of Health

E. Below 25th Place

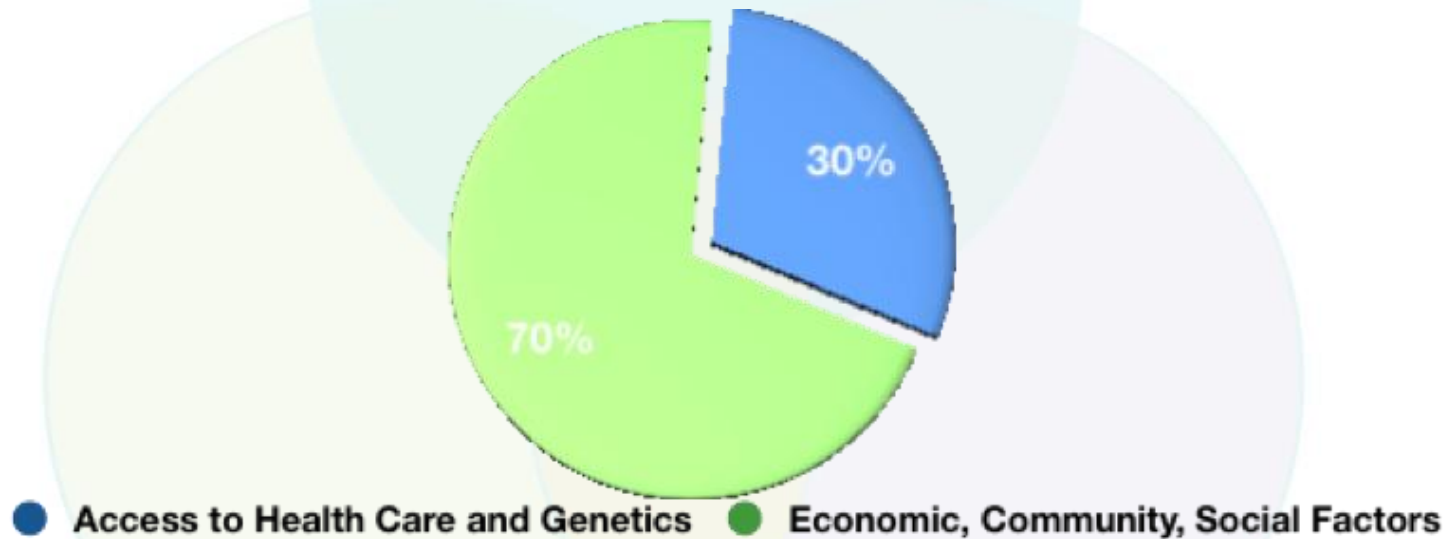
- Japan has the longest life expectancy AND the highest smoking prevalence.
- The French smoke more and live longer.
- The Germans drink more and live longer.

The U.S. has by far the greatest inequality, the fewest social protections, and the most poverty.

Source: www.unnaturalcauses.org

Social Determinants of Health

Health in Context



Adapted from BARHII model (Bay Area Regional Health Inequities Initiative)

Social Determinants of Health

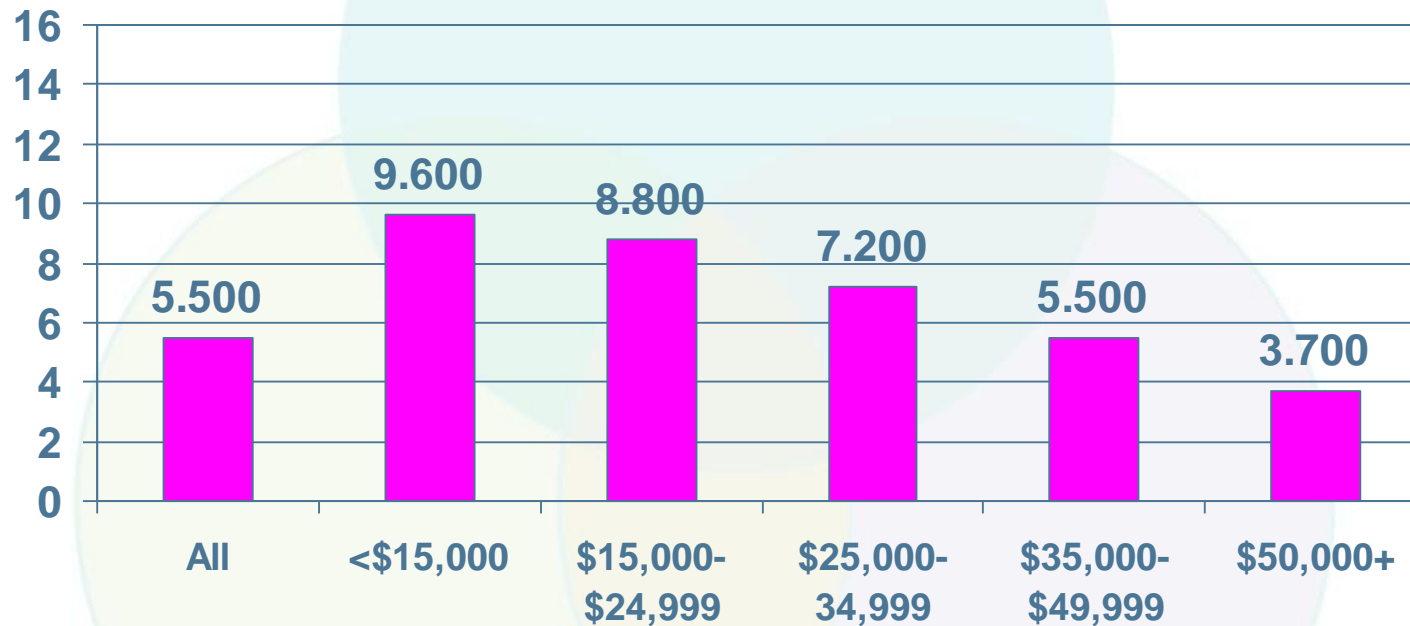
SOCIAL DETERMINANTS OF HEALTH

ECONOMIC OPPORTUNITY	COMMUNITY ENVIRONMENT	SOCIAL FACTORS
<ul style="list-style-type: none">• Adequate income• Jobs• Educational attainment	<ul style="list-style-type: none">• Quality housing• Quality schools• Access to recreational facilities• Access to healthy foods• Transportation resources• Access to healthcare• Clean and safe environment	<ul style="list-style-type: none">• Participation• Social network/ social support• Leadership• Political influence• Organizational networks• Racism

Economic Context



Cardiovascular Disease Prevalence by Income



Source: Colorado Adults BRFSS (Behavioral Risk Factor Surveillance System), 2007

Community Context



Education	Colorado	Douglas	Denver
3rd Grade Scoring CSAP Reading - Proficient or Above	71%	81%	50%

Source: Colorado Children's Campaign, 2007

Social Context

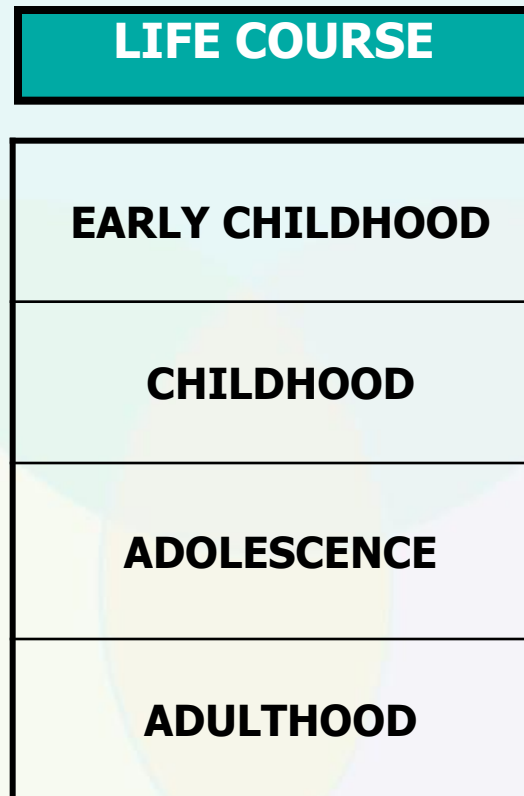


Colorado's Latino Population	Health Statistics Region 6's Latino Population	Latinos in Colorado State Legislature
18.7%	32.3%	4%

Colorado Health Statistics Region 6 consists of eight counties in southeast Colorado: Baca, Bent, Crowley, Huerfano, Kiowa, Las Animas, Otero and Prowers.

Sources: US Census 2007 estimates and La Voz Nueva, <http://www.lavozcolorado.com/news.php?nid=3940>, 2009

Social Determinants of Health



Life Course Perspective

“Obstacles children encounter early in life can set off a negative chain of events so hard to break that they can transcend generations. Poor education leads to limited job options, which leads to lower income, living in poor neighborhoods with poor housing, higher crime, more violence, limited access to nutritious foods, safe places to exercise or medical care - all of which leads to poorer physical and mental health.”

Risa Lavizzo-Mourey, MD, MBA, President and CEO,
Robert Wood Johnson Foundation

An Explanatory Framework for Conceptualizing the Social Determinants of Health

**NATIONAL INFLUENCES
GOVERNMENT POLICIES
CULTURES**

SOCIAL DETERMINANTS OF HEALTH

INDIVIDUAL FACTORS

POPULATION HEALTH OUTCOMES

LIFE COURSE

EARLY CHILDHOOD

CHILDHOOD

ADOLESCENCE

ADULTHOOD

	ECONOMIC OPPORTUNITY	COMMUNITY ENVIRONMENT	SOCIAL FACTORS
	Adequate income Jobs Educational attainment	Quality housing Quality schools Access to recreational facilities Access to healthy foods Transportation resources Access to healthcare Clean and safe environment	Participation Social network social support Leadership Political influence Organizational networks Racism

HEALTH BEHAVIORAL	MENTAL/ PSYCHO-SOCIAL
CULTURAL NORMS	
<ul style="list-style-type: none"> • Diet & nutrition • Physical activity • Smoking • Alcohol consumption & addictive behaviors • Preventive health care use • Violence/ intentional injury • Unintentional injury • Parenting skills 	<ul style="list-style-type: none"> • Self esteem • Emotional state • Coping • Attachment • Demand/ strain • Sense of control • Stress • Perceptions • Expectations • Mental state

QUALITY OF LIFE

MORBIDITY

MORTALITY

LIFE EXPECTANCY

Health Equity

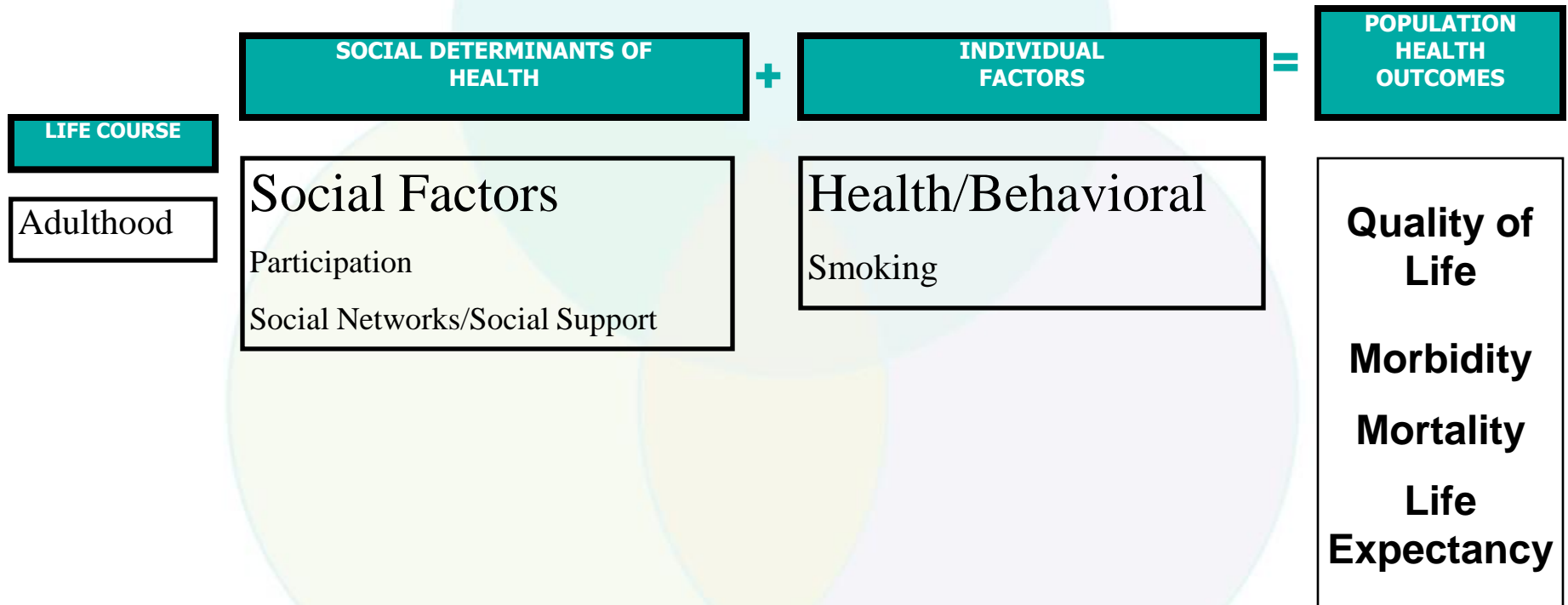
Social Determinants of Health



Case Study

Individual Factors Case Study

The Kaleidoscope Project



Social Determinants of Health



What other prevailing public health models are being used?

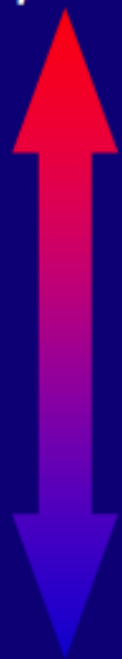
SDoH and the Socio-Ecological Model



The Socio-Ecological model is a way to take into account the varying levels of influence necessary to assess and affect the Social Determinants of Health and move towards health equity.

Factors that Affect Health

Smallest
Impact



Largest
Impact



Counseling
& Education

Clinical
Interventions

Long-lasting
Protective Interventions

**Changing the Context
to make individuals' default
decisions healthy**

Socioeconomic Factors

Examples

Eat healthy, be
physically active

Rx for high blood
pressure, high
cholesterol, diabetes

Immunizations, brief
intervention, cessation
treatment, colonoscopy

Fluoridation, 0g trans
fat, iodization, smoke-
free laws, tobacco tax

Poverty, education,
housing, inequality

Social Determinants of Health



Incorporating SDoH into program planning and implementation

Recommendations for Addressing the Social Determinants of Health

Recommendations at 3 levels

- Addressing the SDoH at the State level
- Changes internal to PSD and CDPHE
- Empowering communities to work on SDoH

Sources: The Prevention Institute, http://www.preventioninstitute.org/documents/HealthierAmerica_051608.pdf and ASTHO (Association of State and Territorial Health Officials)

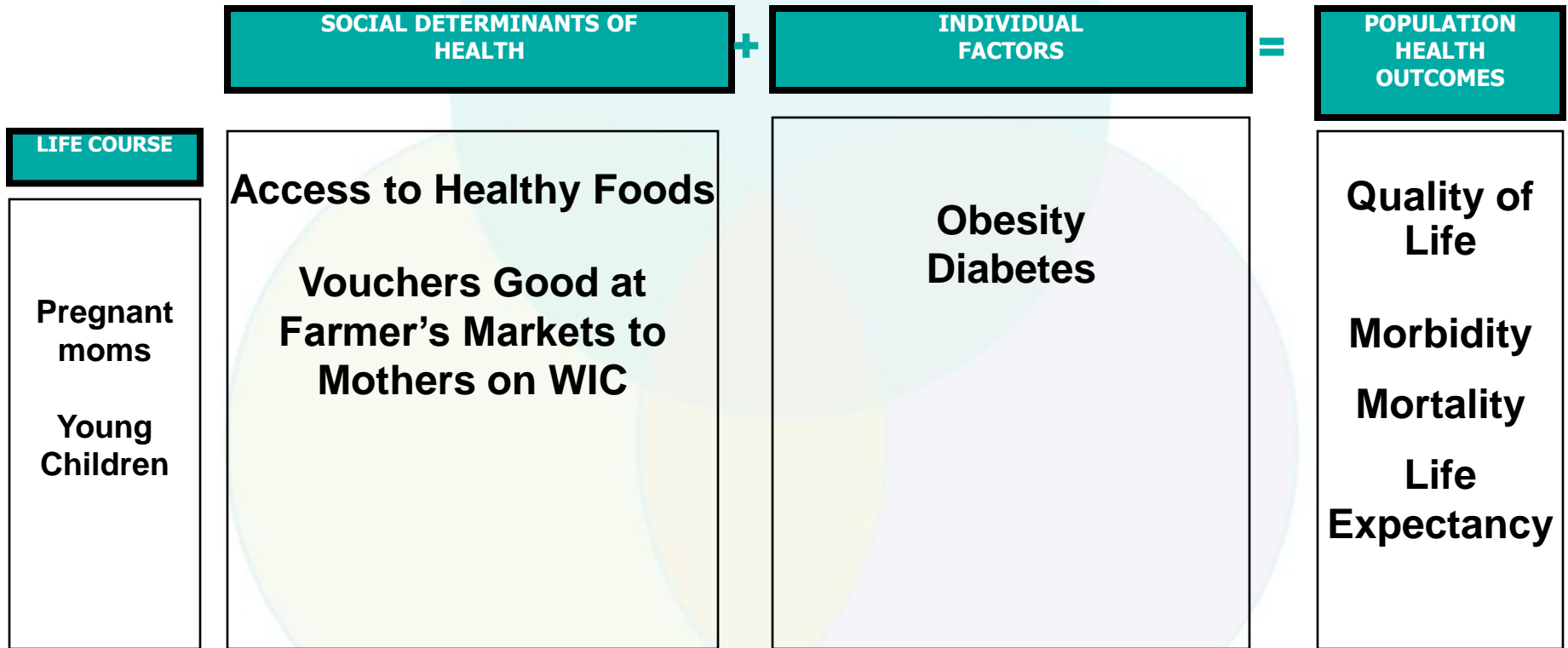
Social Determinants of Health

- **Advocating for and defining public policy to achieve health equity**
- **Coordinated interagency efforts**
- **Creating a supportive environments to enable change**
- **Data collection, monitoring and surveillance of SDoH measures**
- **Population based interventions to address individual factors**
- **Community engagement and capacity building.**

Life Course Case Study



LiveWell Colorado



Social Determinants of Health



Next Steps

Social Determinants of Health

The Future

- Work by national agencies, organizations and foundations is filtering down
- Senate Bill 08-194 (Colorado's Public Health Act) and the Colorado Public Health Improvement Plan
- Work with the Center for Public Health Practice (Colorado School of Public Health) to address elements of SDoH in core competencies
- Workgroup will continue to provide resources and enabling the public health's role in addressing the SDoH.

Social Determinants of Health

The End

Social Determinants of Health



Actually, this is just the beginning...

Social Determinants of Health Workgroup Members

Special thanks to the workgroup members for contributing their expertise:

Karen DeLeeuw

John Romero Campbell

José Esquibel

Cara Snyder

Indira Gujral

Montelle Taméz

Alyssa Lasseter

Joanne Vermeulen

Jessica Osborne

Kathy Watters

RayAnn Rodriguez

Lorena Zimmer

Catherine Guerrero

Tara Trujillo

Social Determinants of Health

Additional Resources

- Robert Wood Johnson Foundation - Commission to Build a Healthier America: <http://www.commissiononhealth.org/>
- Unnatural Causes documentary website: <http://www.unnaturalcauses.org/>
- World Health Organization: http://www.who.int/social_determinants/en/
- Prevention Institute - Health Equity and Community Health Publications: <http://www.preventioninstitute.org/hdpubs.html>
- Blue Cross and Blue Shield of Minnesota Foundation: http://www.bcbsmnfoundation.org/pages-exploretheissues-tier4-Social_Determinants_of_Health_General_?oid=7784

Social Determinants of Health

Access to Colorado Specific Data on the Web

<http://www.cdphe.state.co.us/hs/datahome.html>