

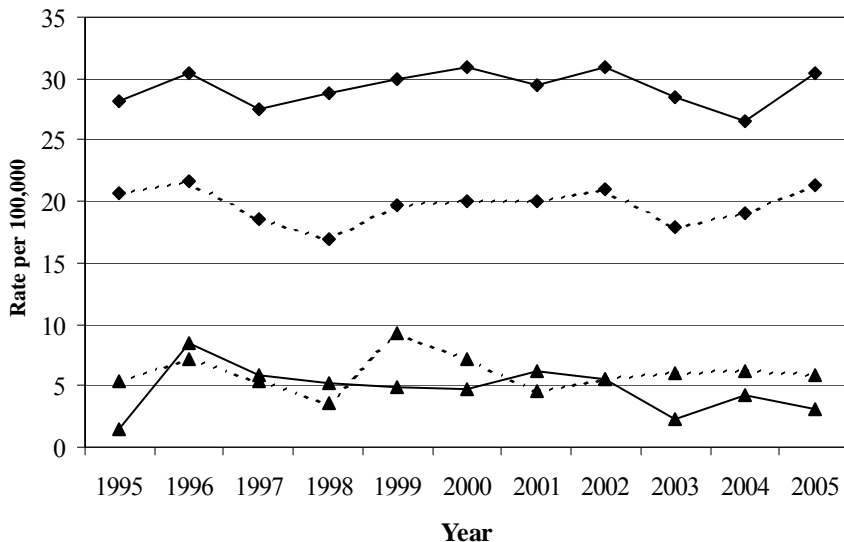
Melanomas of the Skin – Number of Diagnosed Cancers and Average Annual Age-Adjusted Incidence Rates per 100,000 by Sex, Geographic Area, Race/Ethnicity, and Time Period, USA 2000-2004 and Colorado 2000-2004 and 2005

| | USA ¹ 2000-2004 | | Colorado 2000-2004 | | Colorado 2005 | |
|--------------------|----------------------------|-------|--------------------|---------|---------------|-------|
| | N | Rate | N | Rate | N | Rate |
| Male | | | | | | |
| All Races | 111683 | 21.1 | 2342 | 25.0 ★ | 524 | 26.0 |
| White/Non-Hispanic | 103758 | 25.1 | 2278 | 29.2 ★ | 505 | 30.5 |
| White/Hispanic | 1945 | 4.4 ● | 45 | 4.7 ● | 11 | 3.1 ● |
| Black | 433 | 1.0 ● | 8 | 3.5 ● | 3 | 4.4 |
| Female | | | | | | |
| All Races | 85203 | 13.6 | 1854 | 16.6 ★ | 427 | 18.2 |
| White/Non-Hispanic | 77100 | 16.7 | 1757 | 19.6 ★ | 402 | 21.4 |
| White/Hispanic | 2505 | 4.1 ● | 76 | 5.9 ★ ● | 16 | 5.8 ● |
| Black | 584 | 1.0 ● | 8 | 2.1 ● | 0 | 0.0 |

¹ USA rates are from NAACCR; USA rates for “White/Hispanic” category include Hispanics of any race.

- ★ Rate is significantly higher than corresponding rate in column to the left.
- Rate is significantly lower than corresponding rate in column to the left.
- ◆ Rate is significantly higher than White/Non-Hispanic rate for this sex, geographic area, and time period.
- Rate is significantly lower than White/Non-Hispanic rate for this sex, geographic area, and time period.

Melanomas of the Skin – Annual Age-Adjusted Incidence Rates per 100,000 by Sex, Race/Ethnicity, and Year, Colorado 1995-2005



| Estimated Annual Percent Change (EAPC) | |
|--|------|
| Male | |
| White/Non-Hispanic | 0.1 |
| White/Hispanic | -1.0 |
| Black | NC |
| Female | |
| White/Non-Hispanic | 0.0 |
| White/Hispanic | 0.2 |
| Black | NC |

- ★ EAPC is significantly higher than zero.
- EAPC is significantly lower than zero.
- NC = not calculated.

—◆— Male White/Non-Hispanic - - -◆- - - Female White/Non-Hispanic
 —▲— Male White/Hispanic - - -▲- - - Female White/Hispanic

HIGHLIGHTS

- > In Colorado, the cumulative lifetime risk of melanoma is 1 in 33 for males and 1 in 59 for females.
- > The 2000-2004 Colorado melanoma incidence rate for males was 18% higher than the U.S. rate and for females was 22% higher.
- > The Colorado melanoma incidence rate for non-Hispanic white males climbed 4% from 2000-2004 to 2005 while the rate for females climbed 9%.
- > Early detection of melanomas in Colorado improved only slightly from 2000-2004 to 2005. For white Hispanics, however, the early detection rate increased 25 percentage points.
- > The mortality rate for melanomas in Colorado males for 2000-2004 was 8% higher than the U.S. rate, and climbed about 20% in 2005, while the death rate for Colorado females was 18% higher than the U.S. rate but decreased about 25% over this time period.
- > Melanoma mortality rates in Colorado during 1995-2005 were fairly stable.

**Melanomas of the Skin –
Average Annual Age-Specific
Incidence Rates per 100,000
by Sex, Colorado 2001-2005**

| Age | Male | Female |
|-------|-------|--------|
| 0-4 | 0.0 | 0.0 |
| 5-9 | 0.0 | 0.1 |
| 10-14 | 0.2 | 0.5 |
| 15-19 | 1.8 | 2.3 |
| 20-24 | 2.9 | 8.1 |
| 25-29 | 5.8 | 15.1 |
| 30-34 | 10.1 | 16.9 |
| 35-39 | 12.3 | 18.1 |
| 40-44 | 18.0 | 23.1 |
| 45-49 | 25.5 | 24.7 |
| 50-54 | 34.6 | 27.1 |
| 55-59 | 45.8 | 26.0 |
| 60-64 | 53.7 | 28.1 |
| 65-69 | 67.4 | 28.9 |
| 70-74 | 88.5 | 38.1 |
| 75-79 | 120.0 | 35.0 |
| 80-84 | 125.6 | 50.3 |
| 85+ | 135.7 | 44.7 |

**Melanomas of the Skin – Stage of Disease¹ at Diagnosis
by Race/Ethnicity and Time Period, Colorado 2000-2004 and 2005**

| | Cases N | In situ % | Localized % | Regional % | Distant % | Unknown % | % "Early" Detection ² |
|---------------------------|------------|--------------|----------------|---------------|--------------|--------------|-------------------------------------|
| All Races | | | | | | | |
| 2000-2004 | 6290 | 33.2 | 55.5 | 5.1 | 2.4 | 3.9 | 79.6 |
| 2005 | 1498 | 36.5 | 52.8 | 5.5 | 2.1 | 3.1 | 80.7 |
| White/Non-Hispanic | | | | | | | |
| 2000-2004 | 6059 | 33.3 | 55.6 | 4.9 | 2.3 | 3.9 | 80.0 |
| 2005 | 1438 | 36.9 | 52.6 | 5.6 | 2.0 | 2.9 | 80.6 |
| White/Hispanic | | | | | | | |
| 2000-2004 | 180 | 32.8 | 51.7 | 8.9 | 3.3 | 3.3 | 71.5 |
| 2005 | 41 | 34.1 | 53.7 | 2.4 | 2.4 | 7.3 | 86.8 |
| Black | | | | | | | |
| 2000-2004 | 19 | 15.8 | 52.6 | 10.5 | 5.3 | 15.8 | 46.7 |
| 2005 | 4 | 25.0 | 0.0 | 0.0 | 0.0 | 75.0 | 100.0 |

¹ Cases diagnosed in 2000 were staged using SEER Summary Stage 1977; cases diagnosed in 2001-2005 were staged using SEER Summary Stage 2000.

² "Early" detection is percent in situ or ≤1mm depth (unknowns excluded).

Narrative of Selected Findings

Incidence Comparisons between U.S. and Colorado for 2000-2004 by Sex, Race, and Ethnicity. The 2000-2004 Colorado melanoma incidence rate for males was 18% higher than the U.S. rate. The Colorado rate for females was 22% higher than the U.S. rate.

Incidence Trends in Colorado for 1995-2005 by Sex and Race/Ethnicity. Colorado melanoma incidence rates for non-Hispanic white males climbed 4% from 2000-2004 to 2005 while rates for females in this group climbed 9%. However, during the longer time period of 1995-2005, the annual incidence rate of melanoma fluctuated up and down, but with no statistically significant trend.

Incidence Comparisons in Colorado between Race/Ethnicity Groups for 2000-2004 and 2005 by Sex. Melanoma rates in Hispanics and blacks were much lower than in non-Hispanic whites.

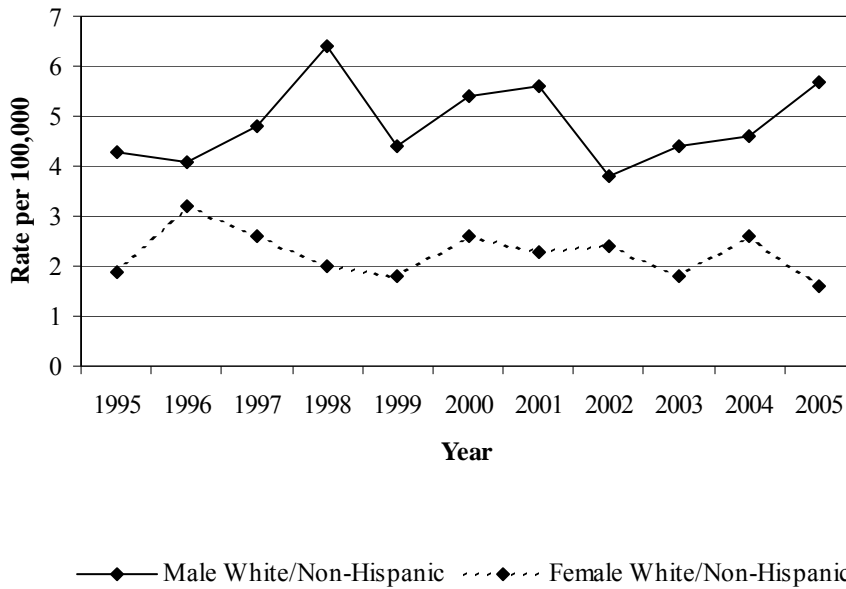
Stage Comparisons in Colorado for 2000-2004 and 2005 by Race/Ethnicity. The Colorado Cancer Coalition has adopted a definition of “early” stage to be less than or equal to 1.00 mm Breslow depth or in situ stage. Using this definition, the 2010 statewide goal for early detection is 85%. The 2000 baseline in Colorado was 81% of melanomas detected early, while 2000-2004 and 2005 statistics showed early detection percentages of 80% and 81%, respectively.

Mortality Comparisons between U.S. and Colorado for 2000-2004 and Mortality Trend in Colorado for 1995-2005 by Sex and Race/Ethnicity. The mortality rate for melanomas in Colorado males for 2000-2004 was 8% higher than the U.S. rate, and climbed about 20% in 2005, while the death rate for Colorado females was 18% higher than the U.S. rate but decreased about 25% over this time period. The trend in mortality rates during 1995-2005 was erratic and not statistically significant.

Comparisons between Counties and Colorado by Sex. For males, melanoma incidence rates in several areas for 1995-99, 2000-02, and/or 2003-05 were statistically elevated (or were at least 20% higher than the state for at least two time periods with at least 10 cases per time period). These areas included PMRs 4 and 12 and the counties of Douglas, Garfield, Gunnison, and Jefferson. For females, using the same criteria, higher rates were seen in PMRs 4, 11, and 13 and the counties of Douglas, El Paso, Fremont, Garfield, and Jefferson. Using the same criteria, higher mortality rates were seen in Adams and Boulder County males and PMR 2 females.

Early detection leads to better survival, and in Colorado approximately 79-81% of cases statewide were detected “early” (in situ stage or less than or equal to 1.00 mm depth) during 2000-02 and 2003-05. However, 12 counties and PMRs 1, 6, and 14 had early detection rates of 75% or less in both time periods. The 12 counties were Baca, Clear Creek, Elbert, Grand, Huerfano, Larimer, Moffat, Montrose, Morgan, Pitkin, Teller, and Yuma. Additionally, 12 other counties and three other PMRs (8, 10, and 11) that had early detection rates in 2000-02 of over 75% dropped to 75% or less during 2003-05. The counties were Adams, Crowley, Delta, Lake, Las Animas, Logan, Mesa, Otero, Rio Blanco, Rio Grande, Routt, and Summit.

Melanomas of the Skin – Annual Age-Adjusted Mortality Rates per 100,000 by Sex, Race/Ethnicity, and Year, Colorado 1995-2005



| Estimated Annual Percent Change (EAPC) | |
|--|------|
| Male | |
| White/Non-Hispanic | 0.7 |
| White/Hispanic | NC |
| Black | NC |
| Female | |
| White/Non-Hispanic | -2.0 |
| White/Hispanic | NC |
| Black | NC |

★ EAPC is significantly higher than zero.
 ■ EAPC is significantly lower than zero.
 NC = not calculated.

Melanomas of the Skin – Number of Deaths and Age-Adjusted Mortality Rates per 100,000 by Sex, Race/Ethnicity, Geographic Area, and Time Period, USA 2000-2004 and Colorado 2000-2004 and 2005

| | USA ¹ 2000-2004 | | Colorado 2000-2004 | | Colorado 2005 | |
|--------------------|----------------------------|-------|--------------------|-------|---------------|-------|
| | N | Rate | N | Rate | N | Rate |
| Male | | | | | | |
| All Races | 24168 | 3.9 | 350 | 4.2 | 85 | 4.9 |
| White/Non-Hispanic | 23338 | 4.6 | 340 | 4.7 | 83 | 5.7 |
| White/Hispanic | 414 | 1.0 ● | 7 | 1.1 ● | * | * |
| Black | 252 | 0.5 ● | * | * | * | * |
| Female | | | | | | |
| All Races | 14077 | 1.7 | 222 | 2.0 ★ | 35 | 1.5 |
| White/Non-Hispanic | 13317 | 2.1 | 215 | 2.3 | 32 | 1.6 ■ |
| White/Hispanic | 315 | 0.6 ● | 5 | 0.5 | * | * |
| Black | 324 | 0.4 ● | * | * | * | * |

¹ USA mortality data based on all 50 states combined.

* Indicates fewer than three events in this category.

★ Rate is significantly higher than corresponding rate in column to the left.

■ Rate is significantly lower than corresponding rate in column to the left.

◆ Rate is significantly higher than White/Non-Hispanic rate for this sex, geographic area, and time period.

● Rate is significantly lower than White/Non-Hispanic rate for this sex, geographic area, and time period.

Melanomas of the Skin – Number of Diagnosed Cancers and Average Annual Age-Adjusted Incidence Rates per 100,000 by Sex, Place, and Time Period, Colorado 1995-1999, 2000-2002, and 2003-2005

| Place | Male | | | | | | Female | | | | | |
|---------------------|-----------|--------|-----------|--------|-----------|--------|-----------|--------|-----------|--------|-----------|--------|
| | 1995-1999 | | 2000-2002 | | 2003-2005 | | 1995-1999 | | 2000-2002 | | 2003-2005 | |
| | N | Rate | N | Rate | N | Rate | N | Rate | N | Rate | N | Rate |
| Colorado | 2064 | 25.0 | 1448 | 26.1 | 1418 | 24.4 | 1651 | 16.8 | 1131 | 17.2 | 1150 | 16.6 |
| Adams | 123 | 20.5 ■ | 97 | 21.9 | 80 | 19.5 | 88 | 12.7 ■ | 64 | 12.4 ■ | 62 | 11.8 ■ |
| Alamosa | 6 | 23.8 | * | * | * | * | 8 | 24.8 | 4 | 18.8 | * | * |
| Arapahoe | 216 | 24.7 | 130 | 20.7 ■ | 137 | 21.6 | 178 | 15.6 | 127 | 16.9 | 123 | 14.9 |
| Archuleta | 5 | 19.3 | 4 | 17.7 | 8 | 45.1 | 5 | 23.6 | 4 | 19.2 | * | * |
| Baca | * | * | 4 | 38.5 | * | * | 5 | 34.7 | * | * | * | * |
| Bent | 5 | 26.5 | * | * | * | * | * | * | * | * | * | * |
| Boulder | 122 | 23.4 | 95 | 27.3 | 89 | 27.8 | 124 | 19.6 | 84 | 20.2 | 77 | 18.3 |
| Broomfield** | n/a | n/a | 8 | 41.2 | 13 | 31.0 | n/a | n/a | 5 | 23.7 | 14 | 20.4 |
| Chaffee | 9 | 18.6 | 7 | 22.7 | 5 | 16.7 | 6 | 13.2 | 5 | 17.5 | 3 | 10.0 |
| Cheyenne | 3 | 43.5 | * | * | * | * | * | * | * | * | * | * |
| Clear Creek | 8 | 35.5 | 4 | 54.5 | * | * | 3 | 17.2 | 3 | 32.6 | * | * |
| Conejos | * | * | * | * | 4 | 35.4 | 3 | 16.3 | * | * | * | * |
| Costilla | * | * | * | * | * | * | * | * | * | * | * | * |
| Crowley | 3 | 32.0 | * | * | * | * | * | * | * | * | * | * |
| Custer | 3 | 26.4 | * | * | * | * | * | * | * | * | * | * |
| Delta | 26 | 31.6 | 14 | 28.4 | 6 | 11.4 ■ | 22 | 27.4 | * | * | 8 | 12.7 |
| Denver | 249 | 22.5 | 154 | 22.6 | 137 | 19.4 ■ | 170 | 12.4 ■ | 122 | 14.4 ■ | 116 | 13.4 ■ |
| Dolores | * | * | * | * | * | * | * | * | * | * | * | * |
| Douglas | 68 | 34.3 | 67 | 34.8 | 79 | 34.2 | 75 | 23.6 ★ | 56 | 21.9 | 60 | 17.7 |
| Eagle | 11 | 20.0 | 13 | 23.7 | 13 | 54.0 | 6 | 6.9 ■ | 6 | 8.3 ■ | 15 | 34.7 |
| Elbert | 9 | 25.0 | 8 | 24.8 | 6 | 21.1 | 5 | 15.9 | 4 | 10.1 | 3 | 7.5 |
| El Paso | 252 | 28.3 | 184 | 29.7 | 195 | 28.7 | 193 | 16.9 | 146 | 19.2 | 181 | 23.0 ★ |
| Fremont | 26 | 21.5 | 22 | 28.4 | 24 | 30.4 | 21 | 18.9 | 11 | 16.0 | 23 | 32.7 ★ |
| Garfield | 22 | 31.2 | 18 | 32.1 | 12 | 17.2 | 24 | 25.7 | 6 | 8.6 ■ | 19 | 26.6 |
| Gilpin | * | * | 3 | 29.9 | * | * | * | * | * | * | * | * |
| Grand | 3 | 10.1 | 6 | 41.7 | 3 | 9.9 | 9 | 34.3 | 3 | 14.0 | * | * |
| Gunnison | 11 | 43.8 | 5 | 34.7 | 10 | 61.7 | 5 | 21.2 | 3 | 14.0 | * | * |
| Hinsdale | * | * | * | * | * | * | * | * | * | * | * | * |
| Huerfano | 7 | 31.9 | 4 | 26.8 | 3 | 23.3 | * | * | * | * | * | * |
| Jackson | * | * | * | * | * | * | * | * | * | * | * | * |
| Jefferson | 294 | 26.2 | 166 | 22.7 | 215 | 30.2 ★ | 254 | 19.7 ★ | 155 | 18.6 | 150 | 17.8 |
| Kiowa | * | * | * | * | * | * | * | * | * | * | * | * |
| Kit Carson | 5 | 25.8 | * | * | * | * | * | * | * | * | * | * |
| Lake | 5 | 36.8 | 3 | 37.1 | 3 | 25.7 | 3 | 16.1 | * | * | 3 | 26.8 |
| La Plata | 28 | 35.3 | 19 | 30.9 | 14 | 19.7 | 23 | 23.7 | 10 | 15.8 | 11 | 15.7 |
| Larimer | 105 | 23.0 | 92 | 28.1 | 68 | 20.5 | 72 | 12.9 ■ | 74 | 19.4 | 60 | 14.2 |
| Las Animas | 7 | 16.1 | 3 | 11.2 | 5 | 18.2 | 4 | 8.3 | * | * | * | * |
| Lincoln | * | * | 3 | 28.3 | * | * | 3 | 15.9 | * | * | * | * |

★ Rate is significantly higher than Colorado rate.

■ Rate is significantly lower than Colorado rate.

* Indicates fewer than three events in this category.

** Broomfield County statistics are for the years 2002 and 2003-2005 only.

Melanomas of the Skin – Number of Diagnosed Cancers and Average Annual Age-Adjusted Incidence Rates per 100,000 by Sex, Place, and Time Period, Colorado 1995-1999, 2000-2002, and 2003-2005

| Place | Male | | | | | | Female | | | | | |
|------------|-----------|--------|-----------|--------|-----------|--------|-----------|--------|-----------|--------|-----------|--------|
| | 1995-1999 | | 2000-2002 | | 2003-2005 | | 1995-1999 | | 2000-2002 | | 2003-2005 | |
| | N | Rate | N | Rate | N | Rate | N | Rate | N | Rate | N | Rate |
| Logan | 10 | 20.6 | 6 | 19.4 | 8 | 25.8 | 5 | 8.8 | 3 | 10.3 | 7 | 20.9 |
| Mesa | 70 | 25.7 | 52 | 28.5 | 54 | 27.8 | 52 | 17.4 | 38 | 20.2 | 46 | 21.4 |
| Mineral | * | * | * | * | * | * | * | * | * | * | * | * |
| Moffat | * | * | 8 | 42.3 | 4 | 25.6 | 3 | 9.6 | 5 | 28.0 | 4 | 23.4 |
| Montezuma | 13 | 23.0 | 10 | 30.0 | 6 | 14.5 | 9 | 14.6 | 4 | 9.3 | 11 | 25.8 |
| Montrose | 19 | 23.7 | 16 | 28.4 | 9 | 15.9 | 16 | 18.3 | 7 | 11.1 | 6 | 10.5 |
| Morgan | 11 | 19.2 | 5 | 14.3 | 8 | 20.0 | 15 | 21.1 | 4 | 8.1 | 3 | 7.0 |
| Otero | 10 | 18.5 | 5 | 15.8 | 10 | 31.6 | 7 | 10.5 | 8 | 24.4 | 3 | 7.2 |
| Ouray | 5 | 38.3 | * | * | * | * | * | * | * | * | 4 | 62.4 |
| Park | 8 | 28.0 | 5 | 33.0 | 9 | 34.0 | * | * | 5 | 20.4 | 4 | 12.8 |
| Phillips | 5 | 43.1 | * | * | * | * | * | * | * | * | * | * |
| Pitkin | 4 | 17.0 | 7 | 54.8 | 8 | 46.0 | 6 | 17.4 | 5 | 22.0 | 8 | 53.6 |
| Prowers | 3 | 9.7 | 4 | 21.1 | 4 | 24.1 | 4 | 13.1 | * | * | 3 | 10.1 |
| Pueblo | 68 | 20.6 | 41 | 19.7 ■ | 41 | 18.5 ■ | 45 | 11.9 ■ | 28 | 12.2 ■ | 26 | 10.5 ■ |
| Rio Blanco | * | * | 3 | 45.8 | 3 | 33.6 | 5 | 32.9 | 3 | 32.4 | * | * |
| Rio Grande | 11 | 36.6 | * | * | 5 | 24.3 | 8 | 26.8 | 5 | 22.9 | 3 | 17.0 |
| Routt | 13 | 49.6 | 6 | 17.7 | 5 | 16.6 | 13 | 32.9 | 5 | 19.8 | 5 | 21.2 |
| Saguache | * | * | * | * | 4 | 44.4 | * | * | * | * | * | * |
| San Juan | * | * | * | * | * | * | * | * | * | * | * | * |
| San Miguel | * | * | 4 | 46.0 | * | * | 3 | 16.7 | * | * | 3 | 20.2 |
| Sedgwick | * | * | * | * | * | * | * | * | * | * | * | * |
| Summit | 14 | 33.7 | 8 | 17.9 | 13 | 29.6 | 6 | 12.8 | 3 | 7.4 | 4 | 11.7 |
| Teller | 15 | 26.8 | 13 | 46.6 | 8 | 31.2 | 10 | 22.0 | 3 | 6.4 | 8 | 21.1 |
| Washington | * | * | * | * | * | * | * | * | * | * | * | * |
| Weld | 84 | 26.7 | 55 | 26.1 | 51 | 19.4 | 54 | 14.3 | 45 | 17.0 | 36 | 12.1 ■ |
| Yuma | 9 | 36.2 | * | * | 4 | 27.2 | 4 | 13.4 | * | * | * | * |
| PMR 1 | 37 | 21.7 | 16 | 15.2 ■ | 22 | 19.9 | 24 | 12.3 | 11 | 9.8 ■ | 11 | 9.4 ■ |
| PMR 2 | 189 | 25.3 | 147 | 27.1 | 119 | 20.0 ■ | 126 | 13.8 ■ | 119 | 18.3 | 96 | 13.3 ■ |
| PMR 3 | 1081 | 24.4 | 724 | 23.8 | 752 | 24.3 | 893 | 16.3 | 617 | 16.8 | 605 | 15.6 |
| PMR 4 | 275 | 29.5 ★ | 202 | 30.1 | 212 | 28.8 ★ | 205 | 17.5 | 154 | 18.8 | 193 | 22.7 ★ |
| PMR 5 | 17 | 24.6 | 13 | 19.9 | 7 | 12.4 ■ | 11 | 13.3 | 6 | 9.7 | 7 | 12.8 |
| PMR 6 | 24 | 18.5 | 14 | 17.3 | 18 | 22.0 | 21 | 14.9 | 11 | 13.8 | 10 | 9.2 ■ |
| PMR 7 | 68 | 20.6 | 41 | 19.7 ■ | 41 | 18.5 ■ | 45 | 11.9 ■ | 28 | 12.2 ■ | 26 | 10.5 ■ |
| PMR 8 | 20 | 20.2 | 8 | 12.2 ■ | 15 | 23.5 | 20 | 18.8 | 12 | 15.5 | 4 | 5.9 |
| PMR 9 | 47 | 30.0 | 34 | 28.3 | 28 | 21.9 | 38 | 20.9 | 18 | 14.4 | 24 | 17.4 |
| PMR 10 | 61 | 31.1 | 39 | 27.5 | 26 | 17.3 ■ | 47 | 22.1 | 14 | 9.6 ■ | 23 | 15.4 |
| PMR 11 | 109 | 25.3 | 87 | 29.9 | 78 | 25.6 | 97 | 20.3 | 57 | 18.1 | 75 | 21.7 ★ |
| PMR 12 | 32 | 20.2 | 34 | 32.5 | 37 | 37.0 | 27 | 14.6 | 17 | 11.9 | 27 | 25.8 |
| PMR 13 | 43 | 25.9 | 33 | 27.0 | 33 | 26.2 | 32 | 17.4 | 18 | 15.5 | 31 | 26.9 ★ |
| PMR 14 | 14 | 23.2 | 7 | 16.9 | 8 | 20.1 | 6 | 8.8 ■ | 3 | 7.5 | 4 | 7.1 |

For map of Colorado Planning and Management Regions see page 4. PMR1: Logan, Morgan, Phillips, Sedgwick, Washington, and Yuma counties; PMR2: Larimer and Weld counties; PMR3: Adams, Arapahoe, Boulder, Broomfield, Clear Creek, Denver, Douglas, Gilpin, and Jefferson counties; PMR4: El Paso, Park, and Teller counties; PMR5: Cheyenne, Elbert, Kit Carson, and Lincoln counties; PMR6: Baca, Bent, Crowley, Kiowa, Otero, and Prowers counties; PMR7: Pueblo County; PMR8: Alamosa, Conejos, Costilla, Mineral, Rio Grande, and Saguache counties; PMR 9: Archuleta, Dolores, La Plata, Montezuma, and San Juan counties; PMR 10: Delta, Gunnison, Hinsdale, Montrose, Ouray, and San Miguel counties; PMR 11: Garfield, Mesa, Moffat, Rio Blanco, and Routt counties; PMR 12: Eagle, Grand, Jackson, Pitkin, and Summit counties; PMR 13: Chaffee, Custer, Fremont, and Lake counties; PMR 14: Huerfano and Las Animas counties.

Melanomas of the Skin – Number of Cancer Deaths and Average Annual Age-Adjusted Mortality Rates per 100,000 by Sex, Place, and Time Period, Colorado 1995-1999, 2000-2002, and 2003-2005

| Place | Male | | | | | | Female | | | | | |
|--------------|-----------|------|-----------|------|-----------|------|-----------|------|-----------|------|-----------|------|
| | 1995-1999 | | 2000-2002 | | 2003-2005 | | 1995-1999 | | 2000-2002 | | 2003-2005 | |
| | N | Rate | N | Rate | N | Rate | N | Rate | N | Rate | N | Rate |
| Colorado | 315 | 4.2 | 210 | 4.3 | 225 | 4.3 | 192 | 2.0 | 135 | 2.1 | 122 | 1.8 |
| Adams | 29 | 5.2 | 18 | 5.0 | 16 | 5.5 | 18 | 2.8 | 8 | 1.7 | 7 | 1.5 |
| Alamosa | * | * | * | * | * | * | 3 | 9.1 | * | * | * | * |
| Arapahoe | 39 | 4.7 | 19 | 3.5 | 16 | 2.6 | 20 | 1.8 | 13 | 1.8 | 13 | 1.5 |
| Archuleta | * | * | * | * | * | * | * | * | * | * | * | * |
| Baca | * | * | * | * | * | * | * | * | * | * | * | * |
| Bent | * | * | * | * | * | * | * | * | * | * | * | * |
| Boulder | 23 | 5.8 | 13 | 4.4 | 18 | 6.1 | 9 | 1.5 | 10 | 2.6 | 6 | 1.5 |
| Broomfield** | n/a | n/a | * | * | * | * | n/a | n/a | * | * | * | * |
| Chaffee | 3 | 6.4 | * | * | * | * | * | * | * | * | * | * |
| Cheyenne | * | * | * | * | * | * | * | * | * | * | * | * |
| Clear Creek | * | * | * | * | * | * | * | * | * | * | * | * |
| Conejos | * | * | * | * | * | * | * | * | * | * | * | * |
| Costilla | * | * | * | * | * | * | * | * | * | * | * | * |
| Crowley | * | * | * | * | * | * | * | * | * | * | * | * |
| Custer | * | * | * | * | * | * | * | * | * | * | * | * |
| Delta | 3 | 3.5 | 5 | 9.4 | 4 | 6.8 | 5 | 5.9 | * | * | * | * |
| Denver | 39 | 3.9 | 21 | 3.3 | 27 | 4.1 | 31 | 2.2 | 15 | 1.7 | 8 | 0.9 |
| Dolores | * | * | * | * | * | * | * | * | * | * | * | * |
| Douglas | 8 | 5.5 | 9 | 5.3 | 4 | 1.3 | 6 | 3.4 | 7 | 3.7 | 4 | 2.4 |
| Eagle | * | * | * | * | * | * | * | * | * | * | * | * |
| Elbert | * | * | * | * | * | * | * | * | * | * | * | * |
| El Paso | 36 | 4.7 | 21 | 4.4 | 27 | 4.4 | 20 | 1.8 | 13 | 1.8 | 12 | 1.5 |
| Fremont | 6 | 5.4 | * | * | 3 | 3.8 | * | * | * | * | * | * |
| Garfield | 3 | 4.0 | 4 | 10.4 | * | * | * | * | * | * | * | * |
| Gilpin | * | * | * | * | * | * | * | * | * | * | * | * |
| Grand | * | * | * | * | * | * | * | * | * | * | * | * |
| Gunnison | 3 | 9.8 | * | * | * | * | * | * | * | * | * | * |
| Hinsdale | * | * | * | * | * | * | * | * | * | * | * | * |
| Huerfano | * | * | * | * | * | * | * | * | * | * | * | * |
| Jackson | * | * | * | * | * | * | * | * | * | * | * | * |
| Jefferson | 31 | 3.0 | 23 | 3.4 | 33 | 5.3 | 15 | 1.3 | 18 | 2.2 | 16 | 1.9 |
| Kiowa | * | * | * | * | * | * | * | * | * | * | * | * |
| Kit Carson | * | * | * | * | * | * | * | * | * | * | * | * |
| Lake | 3 | 20.6 | * | * | * | * | * | * | * | * | * | * |
| La Plata | 4 | 4.5 | 4 | 6.3 | * | * | 3 | 3.2 | * | * | 3 | 4.2 |
| Larimer | 20 | 4.9 | 9 | 3.5 | 9 | 2.9 | 16 | 2.9 | 9 | 2.6 | 5 | 1.2 |
| Las Animas | * | * | * | * | * | * | * | * | * | * | * | * |
| Lincoln | * | * | * | * | * | * | * | * | * | * | * | * |

★ Rate is significantly higher than Colorado rate.

■ Rate is significantly lower than Colorado rate.

* Indicates fewer than three events in this category.

** Broomfield County statistics are for the years 2002 and 2003-2005 only.

Melanomas of the Skin – Number of Cancer Deaths and Average Annual Age-Adjusted Mortality Rates per 100,000 by Sex, Place, and Time Period, Colorado 1995-1999, 2000-2002, and 2003-2005

| Place | Male | | | | | | Female | | | | | |
|------------|-----------|------|-----------|------|-----------|------|-----------|------|-----------|------|-----------|------|
| | 1995-1999 | | 2000-2002 | | 2003-2005 | | 1995-1999 | | 2000-2002 | | 2003-2005 | |
| | N | Rate | N | Rate | N | Rate | N | Rate | N | Rate | N | Rate |
| Logan | * | * | * | * | * | * | * | * | * | * | * | * |
| Mesa | 9 | 3.3 | 10 | 5.6 | 8 | 4.4 | 6 | 2.0 | 5 | 2.6 | 4 | 1.8 |
| Mineral | * | * | * | * | * | * | * | * | * | * | * | * |
| Moffat | * | * | * | * | * | * | * | * | * | * | * | * |
| Montezuma | 5 | 9.6 | * | * | * | * | * | * | * | * | * | * |
| Montrose | 3 | 3.5 | 4 | 8.0 | 3 | 4.7 | * | * | * | * | 4 | 5.8 |
| Morgan | * | * | 5 | 14.4 | 4 | 11.6 | * | * | 3 | 6.0 | 3 | 6.3 |
| Otero | * | * | * | * | 4 | 11.1 | * | * | * | * | * | * |
| Ouray | * | * | * | * | * | * | * | * | * | * | * | * |
| Park | * | * | * | * | * | * | * | * | * | * | * | * |
| Phillips | * | * | * | * | * | * | * | * | * | * | * | * |
| Pitkin | * | * | * | * | * | * | * | * | * | * | 4 | 28.4 |
| Prowers | * | * | * | * | * | * | * | * | * | * | * | * |
| Pueblo | 14 | 4.5 | 6 | 3.4 | 14 | 6.3 | 13 | 3.0 | 8 | 2.8 | 4 | 1.4 |
| Rio Blanco | * | * | * | * | * | * | * | * | * | * | * | * |
| Rio Grande | * | * | * | * | * | * | * | * | * | * | * | * |
| Routt | 4 | 22.9 | * | * | * | * | * | * | * | * | * | * |
| Saguache | * | * | * | * | * | * | * | * | * | * | * | * |
| San Juan | * | * | * | * | * | * | * | * | * | * | * | * |
| San Miguel | * | * | * | * | * | * | * | * | * | * | * | * |
| Sedgwick | * | * | * | * | * | * | * | * | * | * | * | * |
| Summit | * | * | * | * | * | * | * | * | * | * | * | * |
| Teller | * | * | * | * | * | * | * | * | * | * | * | * |
| Washington | * | * | * | * | * | * | * | * | * | * | * | * |
| Weld | 7 | 2.5 | 10 | 4.6 | 9 | 5.1 | 6 | 1.6 | 7 | 2.8 | 9 | 3.3 |
| Yuma | * | * | * | * | * | * | * | * | * | * | * | * |
| PMR 1 | 3 | 1.7 | 10 | 9.5 | 7 | 7.1 | 4 | 1.7 | 3 | 2.0 | 5 | 3.6 |
| PMR 2 | 27 | 3.9 | 19 | 4.0 | 18 | 3.8 | 22 | 2.4 | 16 | 2.7 | 14 | 2.1 |
| PMR 3 | 170 | 4.3 | 105 | 3.9 | 117 | 4.2 | 99 | 1.9 | 73 | 2.1 | 55 | 1.5 |
| PMR 4 | 38 | 4.7 | 22 | 4.3 | 28 | 4.4 | 22 | 1.9 | 14 | 1.8 | 14 | 1.6 |
| PMR 5 | 3 | 4.6 | * | * | * | * | * | * | * | * | * | * |
| PMR 6 | 3 | 2.2 | 5 | 6.2 | 6 | 6.8 | 5 | 3.6 | 4 | 4.1 | 3 | 2.7 |
| PMR 7 | 14 | 4.5 | 6 | 3.4 | 14 | 6.3 | 13 | 3.0 | 8 | 2.8 | 4 | 1.4 |
| PMR 8 | * | * | * | * | 3 | 4.1 | 3 | 2.6 | * | * | * | * |
| PMR 9 | 10 | 6.4 | 6 | 5.7 | 6 | 5.1 | 5 | 2.7 | * | * | 4 | 2.9 |
| PMR 10 | 9 | 4.2 | 11 | 7.5 | 9 | 5.7 | 7 | 3.1 | 4 | 2.2 | 4 | 2.4 |
| PMR 11 | 18 | 4.4 | 14 | 5.1 | 11 | 4.0 | 8 | 1.7 | 7 | 2.1 | 8 | 2.3 |
| PMR 12 | 3 | 1.4 | 3 | 4.1 | * | * | * | * | * | * | 4 | 6.7 |
| PMR 13 | 12 | 6.6 | 5 | 3.9 | 4 | 3.2 | * | * | * | * | 4 | 3.5 |
| PMR 14 | 3 | 4.5 | * | * | * | * | * | * | * | * | * | * |

For map of Colorado Planning and Management Regions see page 4. PMR1: Logan, Morgan, Phillips, Sedgwick, Washington, and Yuma counties; PMR2: Larimer and Weld counties; PMR3: Adams, Arapahoe, Boulder, Broomfield, Clear Creek, Denver, Douglas, Gilpin, and Jefferson counties; PMR4: El Paso, Park, and Teller counties; PMR5: Cheyenne, Elbert, Kit Carson, and Lincoln counties; PMR6: Baca, Bent, Crowley, Kiowa, Otero, and Prowers counties; PMR7: Pueblo County; PMR8: Alamosa, Conejos, Costilla, Mineral, Rio Grande, and Saguache counties; PMR 9: Archuleta, Dolores, La Plata, Montezuma, and San Juan counties; PMR 10: Delta, Gunnison, Hinsdale, Montrose, Ouray, and San Miguel counties; PMR 11: Garfield, Mesa, Moffat, Rio Blanco, and Routt counties; PMR 12: Eagle, Grand, Jackson, Pitkin, and Summit counties; PMR 13: Chaffee, Custer, Fremont, and Lake counties; PMR 14: Huerfano and Las Animas counties.

Melanomas of the Skin – Stage of Disease at Diagnosis
by Place and Time Period, Colorado 2000-2002, and 2003-2005

| Place | 2000-2002 | | 2003-2005 | |
|--------------|------------|-------------------------------------|------------|-------------------------------------|
| | Cases N | % "Early" Detection ¹ | Cases N | % "Early" Detection ¹ |
| Colorado | 3868 | 81.1 | 3920 | 78.5 |
| Adams | 222 | 80.9 | 203 | 72.6 |
| Alamosa | 7 | 60.0 | * | * |
| Arapahoe | 384 | 80.3 | 391 | 76.8 |
| Archuleta | 14 | 92.3 | 21 | 85.0 |
| Baca | 8 | 50.0 | 4 | 75.0 |
| Bent | * | * | 7 | 83.3 |
| Boulder | 258 | 81.7 | 247 | 79.8 |
| Broomfield** | 14 | 61.5 | 41 | 83.8 |
| Chaffee | 18 | 94.1 | 16 | 80.0 |
| Cheyenne | * | * | * | * |
| Clear Creek | 8 | 71.4 | 5 | 75.0 |
| Conejos | * | * | 6 | 40.0 |
| Costilla | * | * | * | * |
| Crowley | 3 | 100.0 | 3 | 66.7 |
| Custer | 3 | 100.0 | 6 | 100.0 |
| Delta | 24 | 90.5 | 18 | 50.0 |
| Denver | 426 | 82.2 | 402 | 81.3 |
| Dolores | * | * | * | * |
| Douglas | 164 | 80.3 | 201 | 77.4 |
| Eagle | 39 | 84.6 | 40 | 86.5 |
| Elbert | 19 | 72.2 | 16 | 75.0 |
| El Paso | 468 | 81.1 | 597 | 82.7 |
| Fremont | 55 | 78.4 | 83 | 86.5 |
| Garfield | 38 | 91.4 | 52 | 86.7 |
| Gilpin | 5 | 100.0 | 5 | 100.0 |
| Grand | 14 | 61.5 | 7 | 71.4 |
| Gunnison | 13 | 81.8 | 16 | 93.3 |
| Hinsdale | * | * | * | * |
| Huerfano | 7 | 50.0 | 6 | 50.0 |
| Jackson | * | * | * | * |
| Jefferson | 505 | 82.3 | 519 | 76.1 |
| Kiowa | * | * | * | * |
| Kit Carson | 5 | 50.0 | 5 | 80.0 |
| Lake | 4 | 100.0 | 6 | 33.3 |
| La Plata | 51 | 91.9 | 54 | 87.2 |
| Larimer | 213 | 69.3 | 167 | 72.7 |
| Las Animas | 7 | 85.7 | 12 | 54.5 |
| Lincoln | 3 | 66.7 | 3 | 100.0 |

Note: Data for 1995-1999 not displayed due to incomplete depth of invasion reporting.

¹ "Early" detection for melanomas is percent in situ or ≤ 1 mm depth (unknowns excluded).

* Indicates fewer than three events in this category.

** Broomfield County statistics are for the years 2002 and 2003-2005 only.

Melanomas of the Skin – Stage of Disease at Diagnosis
by Place and Time Period, Colorado 2000-2002, and 2003-2005

| Place | 2000-2002 | | 2003-2005 | |
|------------|------------|-------------------------------------|------------|-------------------------------------|
| | Cases N | % "Early" Detection ¹ | Cases N | % "Early" Detection ¹ |
| Logan | 14 | 78.6 | 21 | 58.8 |
| Mesa | 125 | 81.7 | 139 | 70.2 |
| Mineral | * | * | * | * |
| Moffat | 16 | 64.3 | 13 | 75.0 |
| Montezuma | 28 | 96.3 | 31 | 82.8 |
| Montrose | 32 | 65.5 | 29 | 73.1 |
| Morgan | 16 | 57.1 | 19 | 62.5 |
| Otero | 18 | 76.5 | 18 | 56.3 |
| Ouray | 3 | 50.0 | 7 | 85.7 |
| Park | 12 | 81.8 | 21 | 100.0 |
| Phillips | * | * | 3 | 66.7 |
| Pitkin | 14 | 75.0 | 21 | 68.4 |
| Prowers | 9 | 71.4 | 13 | 90.0 |
| Pueblo | 110 | 76.8 | 117 | 78.9 |
| Rio Blanco | 9 | 100.0 | 5 | 75.0 |
| Rio Grande | 11 | 90.0 | 11 | 55.6 |
| Routt | 23 | 89.5 | 13 | 50.0 |
| Saguache | * | * | 5 | 50.0 |
| San Juan | * | * | * | * |
| San Miguel | 7 | 66.7 | 7 | 83.3 |
| Sedgwick | * | * | * | * |
| Summit | 16 | 86.7 | 22 | 71.4 |
| Teller | 23 | 66.7 | 21 | 73.7 |
| Washington | 4 | 75.0 | * | * |
| Weld | 167 | 82.7 | 138 | 80.3 |
| Yuma | 4 | 50.0 | 5 | 75.0 |
| PMR 1 | 42 | 64.1 | 51 | 65.1 |
| PMR 2 | 380 | 75.2 | 305 | 76.2 |
| PMR 3 | 1986 | 81.4 | 2014 | 77.8 |
| PMR 4 | 503 | 80.4 | 639 | 83.0 |
| PMR 5 | 27 | 68.0 | 24 | 77.3 |
| PMR 6 | 40 | 73.5 | 45 | 71.8 |
| PMR 7 | 110 | 76.8 | 117 | 78.9 |
| PMR 8 | 26 | 77.3 | 26 | 57.1 |
| PMR 9 | 95 | 93.7 | 107 | 85.6 |
| PMR 10 | 80 | 75.7 | 78 | 74.6 |
| PMR 11 | 211 | 83.7 | 222 | 73.3 |
| PMR 12 | 83 | 79.7 | 90 | 77.4 |
| PMR 13 | 80 | 83.6 | 111 | 83.0 |
| PMR 14 | 14 | 69.2 | 18 | 52.9 |

For map of Colorado Planning and Management Regions see page 4. PMR1: Logan, Morgan, Phillips, Sedgwick, Washington, and Yuma counties; PMR2: Larimer and Weld counties; PMR3: Adams, Arapahoe, Boulder, Broomfield, Clear Creek, Denver, Douglas, Gilpin, and Jefferson counties; PMR4: El Paso, Park, and Teller counties; PMR5: Cheyenne, Elbert, Kit Carson, and Lincoln counties; PMR6: Baca, Bent, Crowley, Kiowa, Otero, and Prowers counties; PMR7: Pueblo County; PMR8: Alamosa, Conejos, Costilla, Mineral, Rio Grande, and Saguache counties; PMR 9: Archuleta, Dolores, La Plata, Montezuma, and San Juan counties; PMR 10: Delta, Gunnison, Hinsdale, Montrose, Ouray, and San Miguel counties; PMR 11: Garfield, Mesa, Moffat, Rio Blanco, and Routt counties; PMR 12: Eagle, Grand, Jackson, Pitkin, and Summit counties; PMR 13: Chaffee, Custer, Fremont, and Lake counties; PMR 14: Huerfano and Las Animas counties.