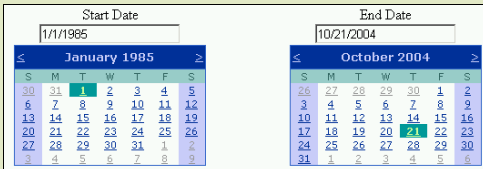


## Graphing Options

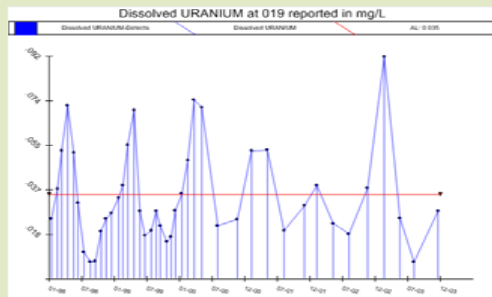


By using the interactive calendars, you simply pick start and end dates for which period the data will be displayed.

Select up to two combinations of sample location, matrix, chemical, fraction, action level and data provider.

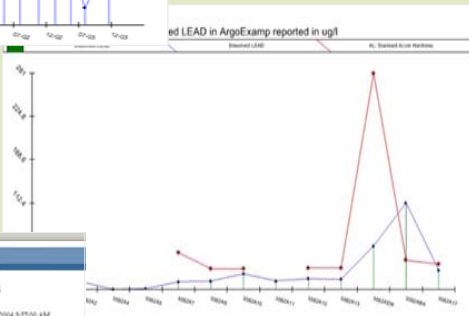
Main		Comparison	
Location:	003	Location:	015A
Matrix:	Groundwater	Matrix:	Groundwater
Chemical:	CALCIUM	Chemical:	URANIUM
Fraction:	Dissolved	Fraction:	Dissolved
Action Level:	None	Action Level:	None
Data Provider:	All	Data Provider:	All

## Graphs



Create graphs comparing different chemicals and/or sample locations, or create a graph that shows the regulatory standard or action level.

Location Group Graphs  
Compare a number of locations on a single graph.



Bar and Whisker Graphs  
Show statistics of the data for one or more locations.



## EcoSites

EcoSites is an interactive data mapping application that allows users to view environmental monitoring data through interactive maps and graphs.

Benefits of the system include coordination between groups and a standard method for presenting data to the public for all sites.

Types of map data available include:

- Sampling Locations
- Site Boundaries
- Roads
- Rivers and Lakes
- Clean Up Areas
- USGS Topographic Maps
- Current and Historic Aerial Photographs

Visit the EcoSites webpage at:  
<http://www.cdphe.state.co.us/hm/hmmapapps.htm>

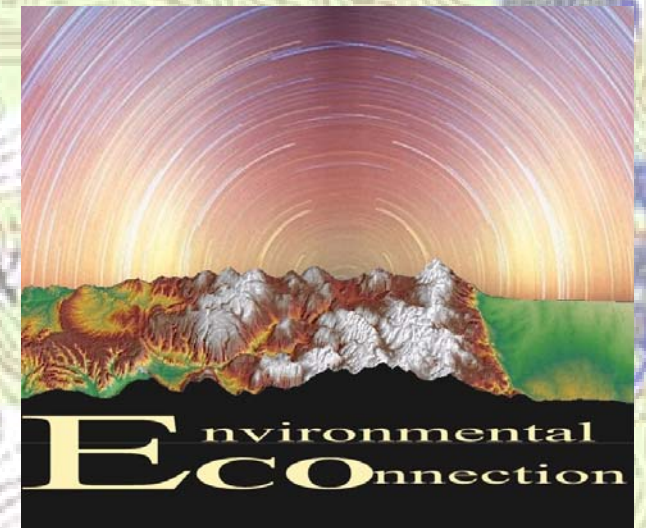
For More Information Please Contact

Customer Technical Assistance  
(303) 692-3320, or Toll Free at 1-888-569-1831, Ext. 3320  
[comments.hmwm@state.co.us](mailto:comments.hmwm@state.co.us)  
Colorado Department of Public Health and Environment  
4300 Cherry Creek Drive South  
Denver, CO 80246-1530

## A Guide to EcoSites

### Online Data Mapping System

Developed by the Colorado Department of Public Health and Environment's Hazardous Materials and Waste Management Division



<http://www.cdphe.state.co.us/hm/hmmapapps.htm>



Colorado Department of Public Health and Environment

# EcoSites Homepage

The Colorado Department of Public Health and Environment's Hazardous Materials and Waste Management Division has developed online data mapping applications for a number of our environmental clean-up projects.

Colorado Department of Public Health and Environment  
 Department Home | About the Department | Certificates | Environment | Health | News Releases | Regulations |

Google search entire web search www.cdphe.state.co.us

**Hazardous Materials and Waste Management Division**  
 Internet Mapping Sites

State Wide Applications  
 Hazardous Materials Site Search Application

Site Specific Applications  
 Rocky Flats Site  
 Rocky Mountain Arsenal  
 Lowry Northwest Neighborhood  
 Former Arapco Landfill  
 Cotter Mill Site  
 Left Hand Creek Watershed Project

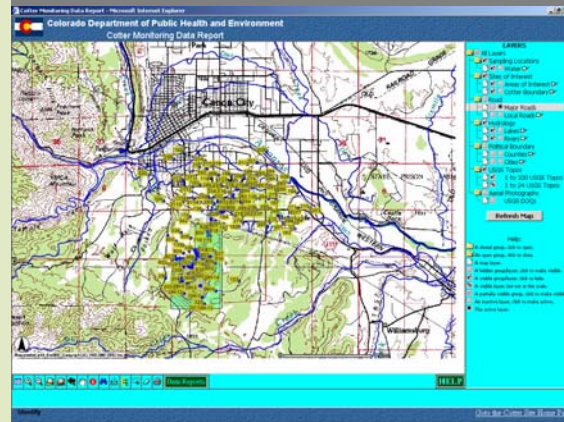
Links under Site Specific Applications launch homepages for accessing a site's monitoring data application.

This is the homepage for the Cotter/Lincoln Park Superfund Site in Cañon City, Colorado.

- Cotter Data Mapping Application
- Cotter Data Graphing Application

The homepage provides options for accessing monitoring data via an interactive map or, if a location name is known, directly accessing the sampling application.

# Mapping



EcoSites allows you to use a map to view sampling locations.

## Mapping Tools

The toolbar provides a number of tools: zoom, pan, identify, search and select.



The "Help" button provides a detailed description of how to navigate through the Layers Interface and a description of the functions of the Toolbar.

**LAYERS**

- All Layers
- Sampling Locations
- Water
- Sites of Interest
  - Areas of Interest
  - Cotter Boundary
- Road
  - Major Roads
  - Local Roads
- Hydrology
  - Lakes
  - Rivers
- Political Boundary
  - Counties
  - Cities
- USGS Topos
- Aerial Photographs

Refresh Map

Help:  
 A closed group, click to open.  
 An open group, click to close.  
 A map layer.  
 A hidden group/layer, click to make visible.  
 A visible group/layer, click to hide.  
 A visible layer, but not at this scale.  
 A partially visible group, click to make visible.  
 An inactive layer, click to make active.  
 The active layer.

The "Layers" interface allows you to choose what information to show on the map.

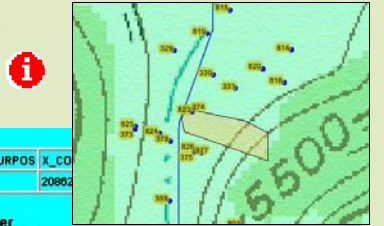
After making selections click the "Refresh Map" button.



By checking the boxes, corresponding information is displayed. Clicking the circle will activate that map layer. Clicking on the small label icons will label the selected features.

# Accessing Data

After displaying the desired data points on the map, using the red "Identify" button and clicking on a point returns a list of all information available about that location.



Air						
Rec	SYS_LOC_CO	LOC_NAME	LOC_DESC	LOC_TYPE	LOC_PURPOS	X_COORD
1	D-03	D-03	D-3 Security Area/East Side	AIR	RCD	20862

Surface Water						
LOC_NAME	LOC_DESC	LOC_TYPE	LOC_PURPOS	X_COORD	Y_COORD	WITHIN_FAC
D3P	D-3 Precipitation	Surface Water	CDPHE	2086295	748954.4	Y
SW055	CULVERT UNDER ROAD AND INNER FENCE SE OF 903 PAD	Surface Water	Facility	20860059.25	748501.125	Y

Site Buildings						
Rec	DEMOLITION	DEMOYEAR	DEMOYN	WSHAPEM	WIDW	
1	Tue, 31 Dec 2999 00:00:00	2999	STANDING	[point]	292	
2	Tue, 31 Dec 2999 00:00:00	2999	STANDING	[point]	392	

## Data Reports

The "Data Reports" button allows you to click on a sample point on the map and retrieve a report for that location. Make sure the layer of interest is active.



Rocky Flats Surface Water Reports

From the Data Report page it is easy to choose parameters to graph and compare data, and sample locations over time.

# Graphing

Using the graphing interface allows you to graph air, surface and groundwater monitoring data.

