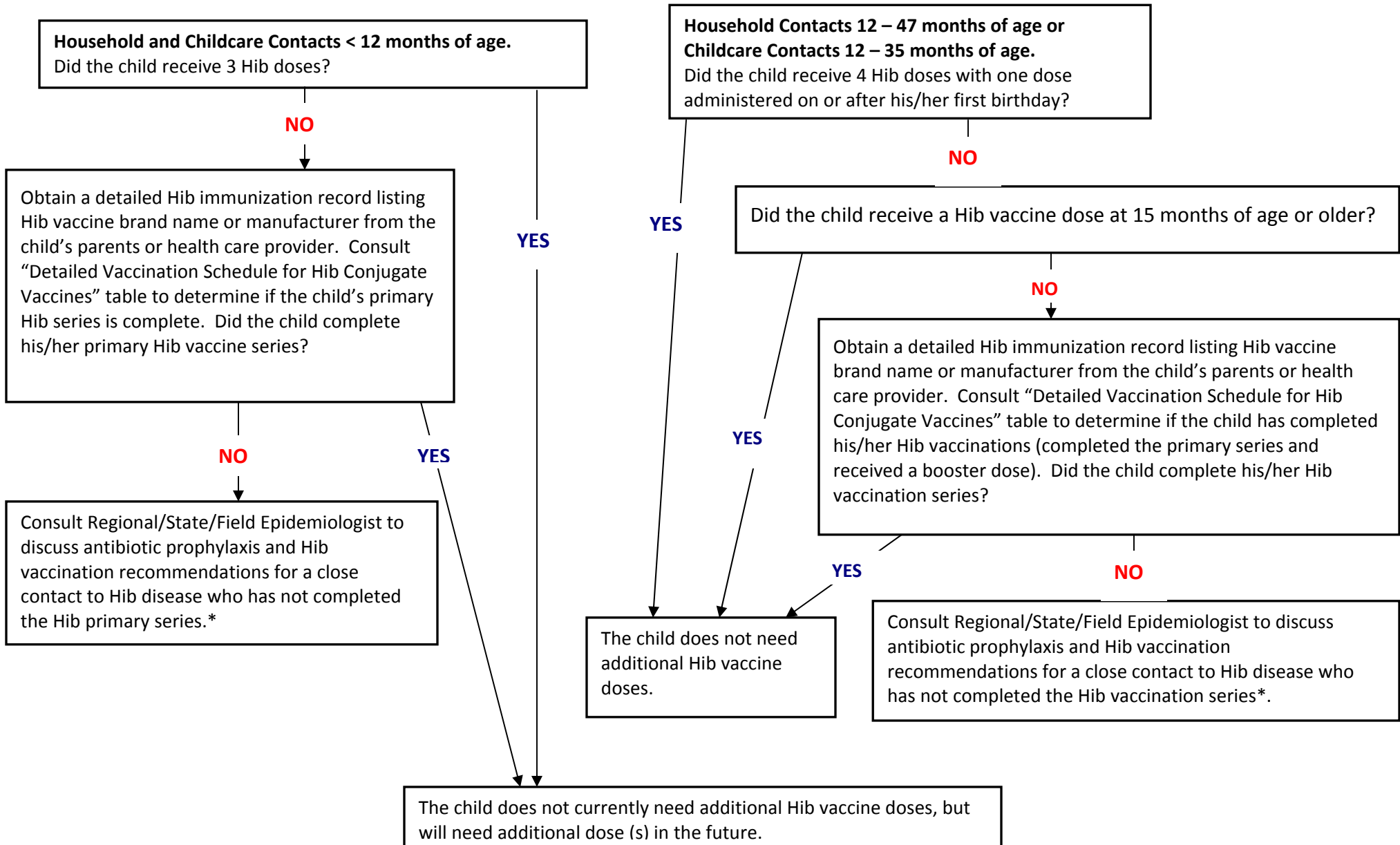


**Flowchart to Determine Need for Prophylaxis and Hib Vaccination  
of *H. influenzae* serotype b (Hib) Close Contacts 6 Weeks – 47 Months of Age\***



\*Any child less than 5 years of age who is not up-to-date on Hib immunizations should promptly receive Hib vaccine, unless Hib vaccine was administered in the past 2 months.

This table assumes all previous Hib vaccinations are valid, i.e. given at appropriate ages and intervals.