

Indicator 14: Workers Employed in Industries with High Risk for Occupational Morbidity

Significance

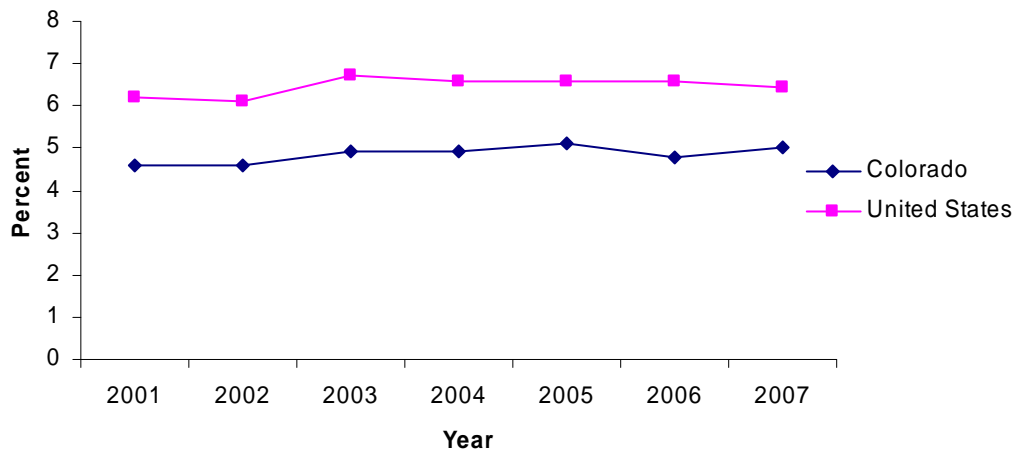
In 2003, the US Bureau of Labor Statistics (BLS) reported an estimated total of 4.4 million occupational injury and illness cases within the private sector workforce. This converts to an estimated incidence rate of 5 occupational injury and illness cases per 100 full-time-equivalent workers. Many industries have significantly higher injury and illness rates than this national average. In 2003, 37 industries had occupational injury and illness rates double the national average, or 10 cases per 100 full-time workers or higher. These industries have been designated as “high-risk industries.” Prevention efforts should focus on these high-risk industries to reduce occupational injury and illness rates.

Methods

The U.S. Census Bureau reports the percentage of workers employed in industries at high risk for occupational morbidity in the County Business Patterns report. High-risk industries are identified based on annual injury and illness incidence rates for private sector workers. Many of the high-risk industries for occupational morbidity are in the manufacturing, wholesale trade, transportation and warehousing, and health care and social assistance sectors. Figure 14.1 and Table 14.1 show the percent of workers in Colorado and the United States employed in industries considered to have a high risk for occupational morbidity for the years 2001 to 2007.

Results

Figure 14.1 Percent of workers employed in industries with high risk for occupational morbidity, Colorado and the United States 2001-2007



Source: US Census Bureau County Business Patterns (CBP) (numerator and denominator)

Table 14.1 Percentage of Workers Employed in Industries with High Risk for Occupational Morbidity, Colorado and the United States 2001-2007		
Year	Colorado	United States
2001	4.6%	6.2%
2002	4.6%	6.1%
2003	4.9%	6.7%
2004	4.9%	6.6%
2005	5.1%	6.6%
2006	4.8%	6.6%
2007	5.0%	6.4%
Average	4.8%	6.5%
<i>Source: US Census Bureau County Business Patterns (CBP) (numerator and denominator)</i>		

- Between 2001- and 2007, approximately 4.8% of the workforce in Colorado and 6.5% of the workforce in the United States were employed in industries with a high risk for non-fatal injuries and illnesses. (Table 14.1 and Figure 14.1)
- Based on this indicator, between 2001 and 2007, a smaller percentage of workers were employed in high risk industries for occupational morbidity in Colorado than in the United States. (Table 14.1 and Figure 14.1)

Data Sources

- US Census Bureau County Business Patterns (CBP) (numerator and denominator)

Limitations

- Since the County Business Patterns estimates are calculated in March of each year, new employees for that year may not be included in the calculation.
- The ranking of high-risk industries may differ by region.
- Estimates are based on a probability sample of private sector employers and do not include all employers.
- Estimates are based on injury and illness data maintained by employers and are subject to sampling error.
- Estimates do not include the military, small farms and federal agencies.

Recommendations

- Identify regionally important high-risk industries in Colorado for prevention activities.