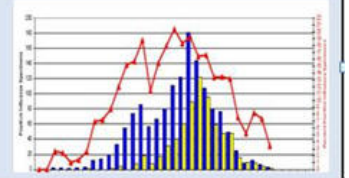


COLORADO FLU REPORT



2011-2012 Influenza Season

Reporting through the week ending February 04, 2012

(All data are provisional and may change as more reports are received.)

Overview: Surveillance for the 2011 –2012 Influenza Season officially began on October 2nd, 2011. The Colorado Flu Report is published weekly to provide a concise and up to date summary of influenza activity in the State of Colorado. Current surveillance activities include: reporting of hospitalizations and deaths due to influenza, reporting of influenza-like illness (ILI) visits by selected sites, reporting of influenza testing activity by sentinel hospital labs, and monitoring circulating influenza viruses through molecular typing at the state public health laboratory.

Synopsis: For the week ending February 4th, influenza activity continued to increase based on sentinel hospital lab data and influenza-associated hospitalizations.

- There were 23 additional hospitalizations reported, eight from the previous week (week ending 1/28/12) and 15 from the most recent week. The cumulative total of hospitalizations is 109 from 21 counties.
http://www.cdphe.state.co.us/dc/Influenza/11_12Hospital.pdf
http://www.cdphe.state.co.us/dc/Influenza/11_12Hospital_by_county.pdf
http://www.cdphe.state.co.us/dc/Influenza/11_12Hospitalized_%20by_age.pdf
- Influenza-Like Illness reported by Kaiser Permanente for the Denver-Boulder metropolitan area remained at 1.2%. Influenza-like illness reported by Mesa County was 0.2%.
http://www.cdphe.state.co.us/dc/Influenza/11_12KP_ILI.pdf
http://www.cdphe.state.co.us/dc/Influenza/11_12MESA_ILI.pdf
- Sentinel hospital labs (18/18 reporting) tested 530 specimens and 10.2% were positive (compared to 9.4% the previous week).
http://www.cdphe.state.co.us/dc/Influenza/11_12Sentinel_Labs.pdf
- For the most recent week, 48 additional specimens (out of 50 submitted) tested positive for influenza by PCR at the state laboratory. Cumulatively, 360 (96.5%) of 373 PCR positive specimens have subtyped as H3, 11 (3%) as 2009 H1N1, and 2 (0.5%) have confirmed as type B.
http://www.cdphe.state.co.us/dc/Influenza/11_12PCR_results.pdf
- No outbreaks were reported during the most recent week.
http://www.cdphe.state.co.us/dc/Influenza/11_12_outbreak.pdf

To view the weekly Colorado Flu (surveillance) Report (available as of 2/8/12), go to:
<http://www.cdphe.state.co.us/dc/Influenza/index.html>

To view the weekly CDC flu (surveillance) Report, go to:
<http://www.cdc.gov/flu/about/season/flu-season-2011-2012.htm>