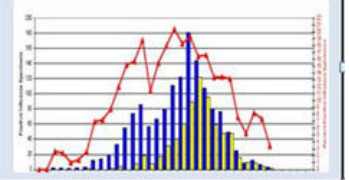


COLORADO FLU REPORT



2011-2012 Influenza Season

Reporting through the week ending May 12, 2012

(All data are provisional and may change as more reports are received.)

Overview: Surveillance for the 2011 – 2012 Influenza Season officially began on October 2nd, 2011. The Colorado Flu Report is published weekly to provide a concise and up to date summary of influenza activity in the State of Colorado. Current surveillance activities include: reporting of hospitalizations and deaths due to influenza, reporting of influenza-like illness (ILI) visits by selected sites, reporting of influenza testing activity by sentinel hospital labs, and monitoring circulating influenza viruses through molecular typing at the state public health laboratory.

Synopsis: For the week ending May 12th, influenza activity remained very low.

- There were 9 additional hospitalizations reported. Of these, 2 were from the most recent week. The cumulative total of hospitalizations is 532 from 42 counties.
http://www.cdphe.state.co.us/dc/Influenza/11_12Hospital.pdf
http://www.cdphe.state.co.us/dc/Influenza/11_12Hospital_by_county.pdf
http://www.cdphe.state.co.us/dc/Influenza/11_12Hospitalized_%20by_age.pdf
- Influenza-Like Illness reported by Kaiser Permanente for the Denver-Boulder metropolitan area was 0.6%. Influenza-like illness reported by Mesa County was 0%.
http://www.cdphe.state.co.us/dc/Influenza/11_12KP_ILI.pdf
http://www.cdphe.state.co.us/dc/Influenza/11_12MESA_ILI.pdf
- Sentinel hospital labs (18/18 reporting) tested 231 specimens and 3.5% were positive (compared to 6.4% the previous week).
http://www.cdphe.state.co.us/dc/Influenza/11_12Sentinel_Labs.pdf
- There were two additional specimens submitted to the state laboratory during the last two weeks. Cumulatively, 560 (94%) of 595 PCR positive specimens have subtyped as H3, 33 (5.5%) as 2009 H1N1, and 2 (0.3%) have confirmed as type B.
http://www.cdphe.state.co.us/dc/Influenza/11_12PCR_results.pdf
- No additional outbreaks were reported during the previous week.
http://www.cdphe.state.co.us/dc/Influenza/11_12_outbreak.pdf

To view the weekly Colorado Flu (surveillance) Report (available as of 5/16/12), go to:
<http://www.cdphe.state.co.us/dc/Influenza/index.html>

To view the weekly CDC flu (surveillance) Report, go to:
<http://www.cdc.gov/flu/about/season/flu-season-2011-2012.htm>