

Lab#	Sample		FIELD PARAMETERS							TRACE METALS						
			FpH	FCond	DTW	DTW_RL	Temp	FIRate	PmRate	U_dis	U_sus	Modis	Mosus	Fedis	Mndis	Sedis
	Date	Loc.	S.U.	µ S	feet	feet	°C	CFS	GPM	mg/L	mg/L	mg/L	mg/L	mg/L	mg/L	mg/L
10-49963	12/28/09	001			46.35											
09-49843	12/29/09	002	NSLW													
09-48815	10/02/09	003	7.08	10900	15.67	14.55	15.6	N/A	0.68	14		60		0.1	0.03	0.149
10-49964	12/28/09	003			14.73											
09-48896	10/08/09	005	7.11	3550	21.23	N/A	12.9	N/A	N/A	4.5	0.0084	6		0.11	5	0.034
09-49140	10/27/09	006	7.75	2510	37.6	N/A	14.8	N/A	1	0.53	0.0002	6		0.09	<0.03	
09-49127	10/26/09	008	7.64	570	N/A	N/A	12.2	N/A	N/A	0.0103	<0.0001	0.006		<0.07	<0.03	
10-49965	12/28/09	009			23.9											
10-49938	01/04/10	009	7.02	2670	33.18	N/A	12.7	N/A	0.42	0.0082		<0.004		<0.07	<0.03	0.019
10-49966	12/28/09	014			35.58											
10-49939	01/04/10	014	8.11	3140	35.5	N/A	14	N/A	0.78	<0.0002		0.007		<0.07	0.03	<0.001
09-49148	10/28/09	015A	7.04	2960	41.03	N/A	13	N/A	1.4	0.0326		<0.004		0.07	<0.03	0.219
10-49961	12/28/09	015A			35.54											
09-49149	10/28/09	015B	NSD													
10-49962	12/28/09	015B	NSD													
10-49967	12/28/09	016			49.6											
10-49968	12/28/09	017			79											
09-49225	11/04/09	019	7.53	450	20.6	N/A	16.9	N/A	0.84	0.0102		0.034		<0.07	<0.03	
09-49139	10/27/09	020	7.37	590	16.5	N/A	15.8	N/A	0.78	0.022		0.044		<0.07	<0.03	
09-48897	10/08/09	021	7.66	6130	14.21	23.33	12.6	N/A	0.82	1.1		14		<0.07	<0.03	
10-49969	12/28/09	021			14.24											
09-48797	10/01/09	024	7.82	1670	25.72	25.75	14.2	N/A	1.2	0.0014	<0.0001	0.01		<0.07	0.05	
10-49970	12/28/09	024			26											
09-49681	12/15/09	035	7.07	3430	28.92	29.9	12.9	N/A	N/A	0.26	0.0103	0.05		<0.07	<0.03	
10-49989	12/28/09	035			29.5											
09-49680	12/15/09	036	7.38	1190	43.7	39.21	11.9	N/A	1.2	0.0024	<0.0001	0.008		0.11	<0.03	
10-49988	12/28/09	036			44.66											
09-49773	12/23/09	037	7.93	2650	52.9	37	12.3	N/A	1.5	0.0173		<0.004		<0.07	<0.03	
10-50010	12/28/09	037			48.69											
09-49771	12/23/09	038	7.72	1940	45.19	34	15.3	N/A	1.5	0.11		0.03		<0.07	<0.03	
10-50011	12/28/09	038			41.13											
09-49020	10/20/09	039	7.82	1940	41.2	N/A	14.5	N/A	1.4	0.0058		<0.004		<0.07	0.05	<0.001
09-49435	11/24/09	039	7.4	2307	33.44	N/A	15	N/A	1.5	0.0089		<0.004		<0.07	0.08	<0.001
09-49530	12/04/09	039	7.54	2360	35.67	N/A	14	N/A	1.5	0.0109	<0.0001	<0.004		<0.07	0.07	<0.001
09-49766	12/21/09	039	7.75	2360	38.1	N/A	13.7	N/A	1.5	0.0102		<0.004		<0.07	0.1	<0.001
10-50012	12/28/09	039			39.61											
09-49021	10/20/09	040	7.93	1550	45.13	N/A	14.4	N/A	1.5	0.0004		<0.004		<0.07	0.07	<0.001
09-49436	11/24/09	040	7.75	1707	39.3	N/A	13.7	N/A	1.5	<0.0002		<0.004		<0.07	0.08	<0.001

Lab#	Sample		FIELD PARAMETERS							TRACE METALS						
			FpH	FCond	DTW	DTW_RL	Temp	FIRate	PmRate	U_dis	U_sus	Modis	Mosus	Fedis	Mndis	Sedis
	Date	Loc.	S.U.	µ S	feet	feet	°C	CFS	GPM	mg/L	mg/L	mg/L	mg/L	mg/L	mg/L	mg/L
09-49767	12/21/09	040	8.12	1750	41.75	N/A	14.2	N/A	1.5	0.0008		<0.004		<0.07	0.11	<0.001
10-50013	12/28/09	040			43.11											
09-49022	10/20/09	041	8.73	1480	42.6	N/A	14.2	N/A	1.4	<0.0002		<0.004		<0.07	0.03	<0.001
09-49437	11/24/09	041	7.96	1616	36.2	N/A	12.6	N/A	1.5	<0.0002		<0.004		<0.07	0.03	<0.001
09-49768	12/21/09	041	8.88	1590	39.63	N/A	14.6	N/A	1.5	0.0002		<0.004		<0.07	<0.03	<0.001
10-50014	12/28/09	041			40.86											
09-49023	10/20/09	042	7.73	2480	41.74	41.4	15.3	N/A	1.4	0.16		0.436		<0.07	0.05	0.077
09-49438	11/25/09	042	7.54	2540	37.18	35.29	13.4	N/A	1.5	0.15		0.383		0.07	0.05	0.072
09-49774	12/23/09	042	7.71	2520	37	34.22	14.6	N/A	1.5	0.18		0.487		<0.07	0.04	0.079
10-50015	12/28/09	042			35											
09-49024	10/20/09	043	7.19	2710	42	41.56	15.5	N/A	1.3	0.0428		<0.004		<0.07	<0.03	0.07
09-49439	11/25/09	043	7.27	2766	42.31	42.1	12.4	N/A	1.5	0.0303		<0.004		<0.07	<0.03	0.052
09-49775	12/23/09	043	7.43	2690	42.3	41.83	13.9	N/A	1.5	0.046		<0.004		<0.07	<0.03	0.071
10-50016	12/28/09	043			42.1											
09-49138	10/27/09	050B	7.25	3380	35.74	34.4	13.6	N/A	1.4	<0.0002		<0.004		1.4	0.44	<0.001
09-48934	10/12/09	114	NSW													
09-48874	10/07/09	122	7.47	630	N/A	N/A	16.2	N/A	51.78	0.0287		0.064		<0.07	<0.03	
09-48899	10/07/09	129	NSW													
09-48873	10/07/09	130	7.75	650	N/A	N/A	15.6	N/A	19.41	0.0128		0.021		<0.07	<0.03	
09-49147	10/28/09	135	7.41	2470	36	36.06	13.6	N/A	1.5	0.0091		<0.004		<0.07	<0.03	0.02
09-48936	10/12/09	141	8.07	1920	71.05	N/A	14.6	N/A	1.5	<0.0002	<0.0001	<0.004		9.2	0.04	
09-48872	10/07/09	144	7.38	700	13.92	N/A	14.1	N/A	N/A	0.0228		0.07		<0.07	<0.03	
09-49850	12/29/09	168	7.73	430	N/A	N/A	16.5	N/A	1.56	0.0132		0.005		<0.07	<0.03	
09-49740	12/18/09	169	7.3	710	N/A	N/A	14.8	N/A	4.54	0.0116		0.021				
09-49842	12/28/09	173	NSW													
10-50173	01/19/10	189	7.32	620	N/A	N/A	14.3	N/A	4.86	0.0405		0.08				
09-49851	12/29/09	199	7.92	660	N/A	N/A	13.6	N/A	13.63	0.0155		<0.004				
09-49849	12/29/09	206	7.4	500	N/A	N/A	15.3	N/A	N/A	0.0398		0.092				
09-49743	12/18/09	231	NSW													
09-49739	12/18/09	244	7.62	660	23.5	N/A	15	N/A	N/A	0.0191		0.049				
09-49738	12/18/09	266	7.98	580	N/A	N/A	14.6	N/A	7.76	0.0235		0.058				
09-49737	12/18/09	267	7.89	590	N/A	N/A	11.6	N/A	N/A	0.0221		0.037				
09-49742	12/18/09	274	NSW													
09-49682	12/15/09	309	7.3	10640	18.08	15.25	15.7	N/A	N/A	9		36		0.13	0.11	
10-49996	12/28/09	309			15.04											
10-49971	12/28/09	325			47.46											
09-49214	11/03/09	329	7.11	3060	27.05	20.32	10.8	N/A	1.2	0.14		2.2		1.4	0.32	
09-49215	11/03/09	330	7.15	3670	19	N/A	14.6	N/A	1	1.4		4.5		<0.07	<0.03	

Lab#	Sample		FIELD PARAMETERS							TRACE METALS						
			FpH	FCond	DTW	DTW_RL	Temp	FIRate	PmRate	U_dis	U_sus	Modis	Mosus	Fedis	Mndis	Sedis
	S.U.	µ S	feet	feet	°C	CFS	GPM	mg/L	mg/L	mg/L	mg/L	mg/L	mg/L	mg/L		
Date	Loc.															
09-48816	10/02/09	999		2.69												
09-48875	10/07/09	999		3.4												
09-48898	10/08/09	999		2.62												
09-48937	10/12/09	999		7.94												
09-49025	10/20/09	999		4.3												
09-49129	10/26/09	999		5.9												
09-49141	10/27/09	999		43.4												
09-49150	10/28/09	999		3.88												
09-49219	11/03/09	999		2.3												
09-49228	11/04/09	999		9.6												
09-49238	11/05/09	999		5.04												
09-49288	11/09/09	999		4.15												
09-49302	11/10/09	999		4.96												
09-49440	11/24/09	999		2.55												
09-49441	11/25/09	999		3.36												
09-49507	12/01/09	999		2.44												
09-49532	12/04/09	999		15.24												
09-49683	12/15/09	999		7.58												
09-49710	12/16/09	999		3.7												
09-49727	12/17/09	999		2.4												
09-49741	12/18/09	999		2.23												
09-49769	12/21/09	999		2.4												
09-49776	12/23/09	999		1.95												
09-49853	12/29/09	999		1.19												
10-49991	12/28/09	1343			22.32											
10-49992	12/28/09	1344			12.87											
10-49990	12/28/09	1400			15.5											
09-49725	12/17/09	PW-2	12.44	4030	68.7	67.4	12.4	N/A	1.2	0.0016		0.041		<0.07	<0.03	
10-49993	12/28/09	PW-2			69.65											

KEY

- N/A = No applicable
- NSFP = No sample - frozen pond
- NSW = No sample winterized
- NSNF = No sample; no flow
- NSPB = No sample; pump broke
- NSLW = No sample low water
- NSCU = No sample conditions unsafe
- NSD = No sample dry
- NSNR = No sample no recovery

Lab#	Sample		RADIONUCLIDES															
			Ra226D		Ra226S		Th230D		Th230S		Pb210D		Pb210S		Po210D		Po210S	
	Date	Loc.	pCi/L	D.L.	pCi/L	D.L.	pCi/L	D.L.	pCi/L	D.L.	pCi/L	D.L.	pCi/L	D.L.	pCi/L	D.L.	pCi/L	D.L.
09-48816	10/02/09	999																
09-48875	10/07/09	999																
09-48898	10/08/09	999																
09-48937	10/12/09	999																
09-49025	10/20/09	999																
09-49129	10/26/09	999																
09-49141	10/27/09	999																
09-49150	10/28/09	999																
09-49219	11/03/09	999																
09-49228	11/04/09	999																
09-49238	11/05/09	999																
09-49288	11/09/09	999																
09-49302	11/10/09	999																
09-49440	11/24/09	999																
09-49441	11/25/09	999																
09-49507	12/01/09	999																
09-49532	12/04/09	999																
09-49683	12/15/09	999																
09-49710	12/16/09	999																
09-49727	12/17/09	999																
09-49741	12/18/09	999																
09-49769	12/21/09	999																
09-49776	12/23/09	999																
09-49853	12/29/09	999																
10-49991	12/28/09	1343																
10-49992	12/28/09	1344																
10-49990	12/28/09	1400																
09-49725	12/17/09	PW-2																
10-49993	12/28/09	PW-2																

KEY

- N/A = No applicable
- NSFP = No sample - frozen pond
- NSW = No sample winterized
- NSNF = No sample; no flow
- NSPB = No sample; pump broke
- NSLW = No sample low water
- NSCU = No sample conditions uns:
- NSD = No sample dry
- NSNR = No sample no recovery

Lab#	Sample		MAJOR IONS									LAB MEASUREMENTS				
			Nadis	Kdis	Cadis	Mgdis	Cl	HCO3	CO3	SO4	NO3	LpH	LCCond	Alk2	TDS	TSS
	Date	Loc.	mg/L	mg/L	mg/L	mg/L	mg/L	mg/L	mg/L	mg/L	mg/L	S.U.	µ S	mg/L	mg/L	mg/L
10-49963	12/28/09	001														
09-49843	12/29/09	002														
09-48815	10/02/09	003	2600	3.1	410	210	500	950	<26	6000	55	7.1	12200	950	11700	39.3
10-49964	12/28/09	003														
09-48896	10/08/09	005	1200	11	320	200	260	520	<10	3500	8.2	7.2	7190	520	6200	4
09-49140	10/27/09	006	420	3.1	120	47	100	200	<10	1200	4	7.8	2590	200	1960	<3
09-49127	10/26/09	008	15	2.4	68	15	11	210	<5	63	0.8	7.7	596	210	388	<3
10-49965	12/28/09	009														
10-49938	01/04/10	009	460	4.7	81	32	40	380	<5	950	8.4	7.11	2600	380	1740	<2.8
10-49966	12/28/09	014														
10-49939	01/04/10	014	630	4	28	3.8	76	340	<10	1100	<0.56	8.09	2953	340	2110	<2.6
09-49148	10/28/09	015A	290	8.7	340	110	100	280	<10	1600	12	7	2990	280	2670	178
10-49961	12/28/09	015A														
09-49149	10/28/09	015B														
10-49962	12/28/09	015B														
10-49967	12/28/09	016														
10-49968	12/28/09	017														
09-49225	11/04/09	019	36	2.2	56	17	16	210	<5	44	0.6	7.5	550	210	312	<3
09-49139	10/27/09	020	18	1.7	75	23	17	210	<5	70	1.4	7.4	658	210	436	<3
09-48897	10/08/09	021	1100	9.6	190	57	160	270	<5	3000	2.6	7.8	5940	270	4810	13.7
10-49969	12/28/09	021														
09-48797	10/01/09	024	350	2.1	59	3.3	76	300	<10	540	<1.1	7.8	1800	300	1240	<2.6
10-49970	12/28/09	024														
09-49681	12/15/09	035	480	4.9	240	77	220	280	<10	1300	27	7	3480	280	2620	526
10-49989	12/28/09	035														
09-49680	12/15/09	036	230	1.4	1.2	0.6	30	130	<10	420	3	7.4	1250	130	746	31.7
10-49988	12/28/09	036														
09-49773	12/23/09	037	460	7.2	97	18	140	95	<5	1200	19	8	2740	95	3520	142
10-50010	12/28/09	037														
09-49771	12/23/09	038	280	4.4	100	28	89	450	<10	790	<0.56	7.8	2060	450	1420	13.8
10-50011	12/28/09	038														
09-49020	10/20/09	039	400	2.9	50	9.6	150	230	<10	660	<0.6	7.7	2020	230	1380	<3
09-49435	11/24/09	039	420	4.4	66	12	180	210	<10	840	<0.6	7.5	2240	210	1540	<2.7
09-49530	12/04/09	039	440	4.2	72	14	160	220	<10	850	<0.6	7.5	2400	220	1330	<3
09-49766	12/21/09	039	400	3.6	67	9	170	450	<10	630	<0.56	8	2420	450	1460	<2.8
10-50012	12/28/09	039														
09-49021	10/20/09	040	290	2.8	54	9.5	75	170	<10	560	<0.6	7.8	1640	170	1110	11.5
09-49436	11/24/09	040	300	3.6	53	10	84	160	<10	580	<0.6	7.8	1670	160	1090	<2.7

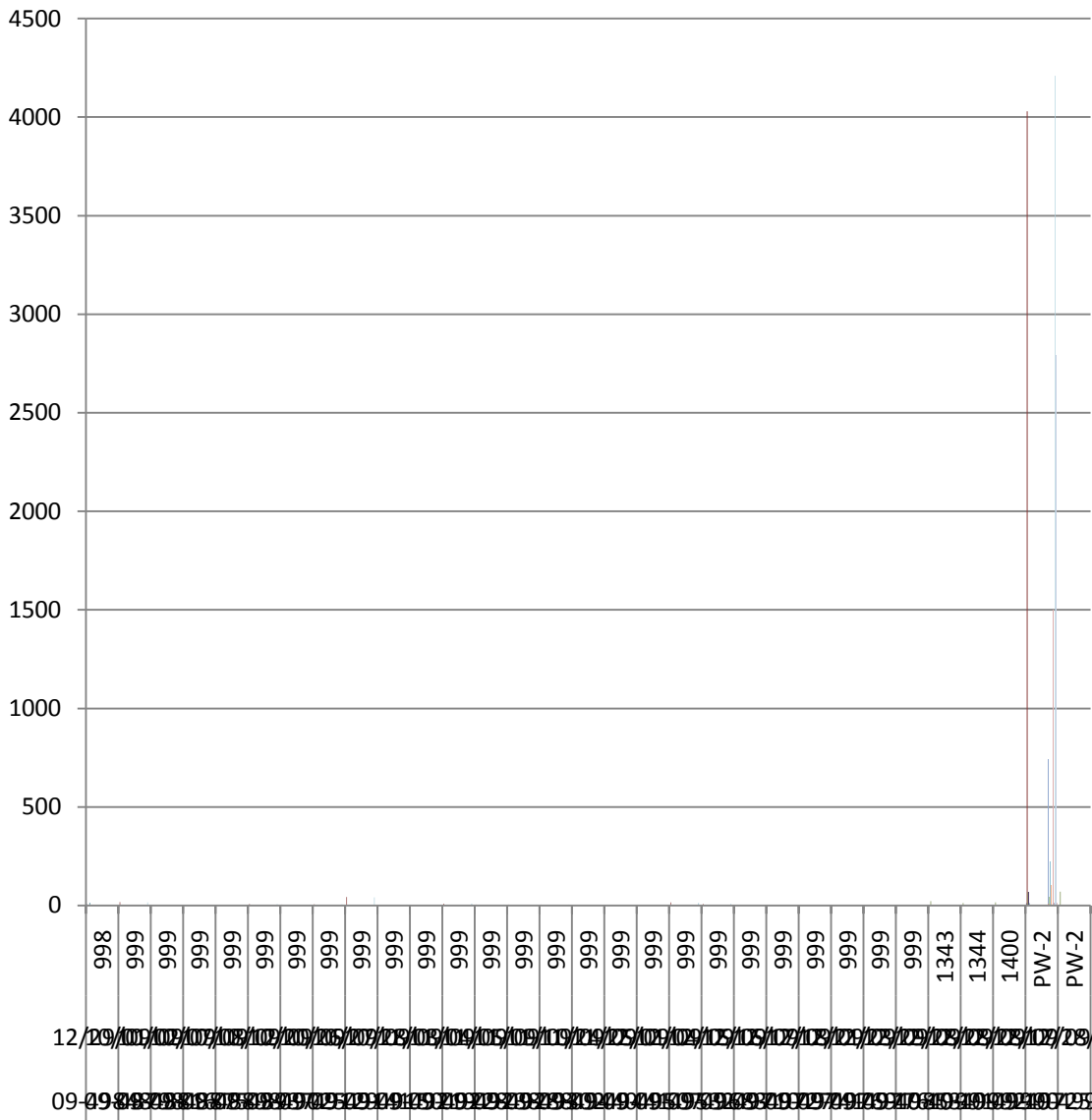
Lab#	Sample		MAJOR IONS									LAB MEASUREMENTS				
			Nadis	Kdis	Cadis	Mgdis	Cl	HCO3	CO3	SO4	NO3	LpH	LCond	Alk2	TDS	TSS
	Date	Loc.	mg/L	mg/L	mg/L	mg/L	mg/L	mg/L	mg/L	mg/L	mg/L	S.U.	µ S	mg/L	mg/L	mg/L
09-49767	12/21/09	040	270	3.2	51	7.1	87	320	<10	580	<0.56	8	1720	320	1400	<2.6
10-50013	12/28/09	040														
09-49022	10/20/09	041	300	2.5	31	3.2	110	140	<10	590	<0.6	8.6	1510	140	1040	<3
09-49437	11/24/09	041	320	2.6	27	2.8	73	140	<10	580	<0.6	8	1510	140	1030	<2.7
09-49768	12/21/09	041	280	2.7	24	2.2	75	260	<10	580	<0.56	8.9	1550	270	1060	<2.7
10-50014	12/28/09	041														
09-49023	10/20/09	042	390	4.4	130	21	95	140	<10	910	14	7.7	2480	140	1820	52.3
09-49438	11/25/09	042	420	4.8	120	38	91	160	<10	1100	13	7.6	2480	160	1830	31.5
09-49774	12/23/09	042	390	4.6	130	32	91	260	<10	930	13	7.7	2590	260	1850	13.8
10-50015	12/28/09	042														
09-49024	10/20/09	043	480	3.6	120	41	92	340	<26	1200	12	7.2	2790	340	2040	241
09-49439	11/25/09	043	420	4.8	120	39	72	300	<10	1000	12	7.3	2670	300	1990	131
09-49775	12/23/09	043	460	3.8	120	29	99	650	<10	1100	12	7.4	2820	650	2060	3.4
10-50016	12/28/09	043														
09-49138	10/27/09	050B	510	7.9	210	55	220	280	<10	1800	<0.6	7.2	3390	280	2700	35.9
09-48934	10/12/09	114														
09-48874	10/07/09	122	18	3.4	72	17	4	300	<10	38	<0.6	7.3	612	300	367	<3
09-48899	10/07/09	129														
09-48873	10/07/09	130	20	2.5	66	45	10	290	<10	34	<0.6	7.8	609	290	368	<3
09-49147	10/28/09	135	434	5.1	180	49	140	480	<26	2800	8	7.4	2660	480	5880	<3
09-48936	10/12/09	141	380	5.3	34	8.8	46	520	<10	490	1.4	8	2020	520	1290	22.8
09-48872	10/07/09	144	24	2.2	82	21	10	330	<10	46	<0.6	7.4	652	330	428	<3
09-49850	12/29/09	168	14	1.8	71	8.9	12	220	<5	27	1.7	7.8	426	220	349	<2.6
09-49740	12/18/09	169														
09-49842	12/28/09	173														
10-50173	01/19/10	189														
09-49851	12/29/09	199														
09-49849	12/29/09	206														
09-49743	12/18/09	231														
09-49739	12/18/09	244														
09-49738	12/18/09	266														
09-49737	12/18/09	267														
09-49742	12/18/09	274														
09-49682	12/15/09	309	2200	7.8	380	210	400	630	<10	5300	120	7.1	10700	630	9120	273
10-49996	12/28/09	309														
10-49971	12/28/09	325														
09-49214	11/03/09	329	520	6	280	91	150	260	<10	2000	<0.6	7.2	3660	260	3280	46.4
09-49215	11/03/09	330	770	5.6	170	69	140	420	<10	1800	2.2	7.1	3910	420	3280	5

Lab#	Sample		MAJOR IONS									LAB MEASUREMENTS				
			Nadis	Kdis	Cadis	Mgdis	Cl	HCO3	CO3	SO4	NO3	LpH	LCCond	Alk2	TDS	TSS
	Date	Loc.	mg/L	mg/L	mg/L	mg/L	mg/L	mg/L	mg/L	mg/L	mg/L	S.U.	μ S	mg/L	mg/L	mg/L
09-49237	11/05/09	384	200	0.93	11	0.67	42	150	<5	300	<0.6	8.3	1040	150	601	40.1
10-50008	12/28/09	384														
10-50009	12/28/09	385														
09-49287	11/11/09	506	17	2.5	69	18	9	240	<10	60	1.9	8.4	587	240	307	<2.6
09-49289	11/11/09	526														
09-49709	12/16/09	701														
09-49708	12/16/09	703														
09-48812	10/02/09	711A														
09-48814	10/02/09	712B	1200	13	480	180	480	310	<10	3400	140	7	7640	310	6460	2.9
09-48813	10/02/09	710 C														
10-49978	12/28/09	800														
10-49979	12/28/09	801														
09-49224	11/04/09	802	480	4.9	180	72	100	230	<5	1100	18	7.6	2720	230	2230	3
10-49980	12/28/09	802														
09-48796	10/01/09	803	420	5.9	260	84	86	280	<5	1700	3.5	7.4	3490	280	2740	<2.6
09-49146	10/28/09	803	450	6.2	280	97	98	260	<10	1500	4.3	7.3	3460	260	2630	<3
10-49981	12/28/09	803														
09-48795	10/01/09	804	670	6.3	290	140	220	370	<5	2200	35	7.1	4710	370	4020	13.2
10-49982	12/28/09	804														
09-49765	12/21/09	805	210	3.1	140	36	130	570	<10	1800	4.8	7.6	1680	570	3020	<2.8
10-49983	12/28/09	805														
09-48794	10/01/09	806	310	4	500	140	120	210	<5	2100	2.7	7.1	4080	210	3690	26.9
10-49984	12/28/09	806														
09-49772	12/23/09	807	160	4	48	12	16	520	<10	280	<0.56	7.7	1080	520	740	44.5
10-49985	12/28/09	807														
09-49286	11/11/09	808	210	3.3	20	3.8	11	320	<10	260	0.8	7.9	1020	320	690	18.1
10-49986	12/28/09	808														
10-49987	12/28/09	813														
09-49218	11/03/09	814	700	4.2	210	90	61	350	<10	1600	0.7	7.7	4000	350	2780	95.6
09-49217	11/03/09	815	130	2.6	14	7.9	28	180	<5	130	1.6	7.9	777	180	644	17.5
09-49234	11/05/09	816	1000	6.3	320	140	250	460	<26	2200	92	7	4830	460	4640	53.8
10-49997	12/28/09	816-OP2														
09-49301	11/10/09	904	13	2	40	11	8	86	<5	100		8.5	356	86	209	9.6
09-49300	11/10/09	907	<3.4	1.7	33	8.5	7.5	78	<5	34		8.2	278	78	163	5.7
09-49004	10/19/09	998	<3	<0.04	0.04	<0.02	<3	<5	<5	<2	<0.6	4.9	7.8	<5	<10.1	<3
09-49508	12/02/09	998	<3.4	0.16	0.12	<0.02	<3.1	<5.1	<5.1	<2.3	<0.6	7.7	4.3	<5.1	<10.1	<2.6
09-49848	12/29/09	998														
09-48798	10/01/09	999											16.6			

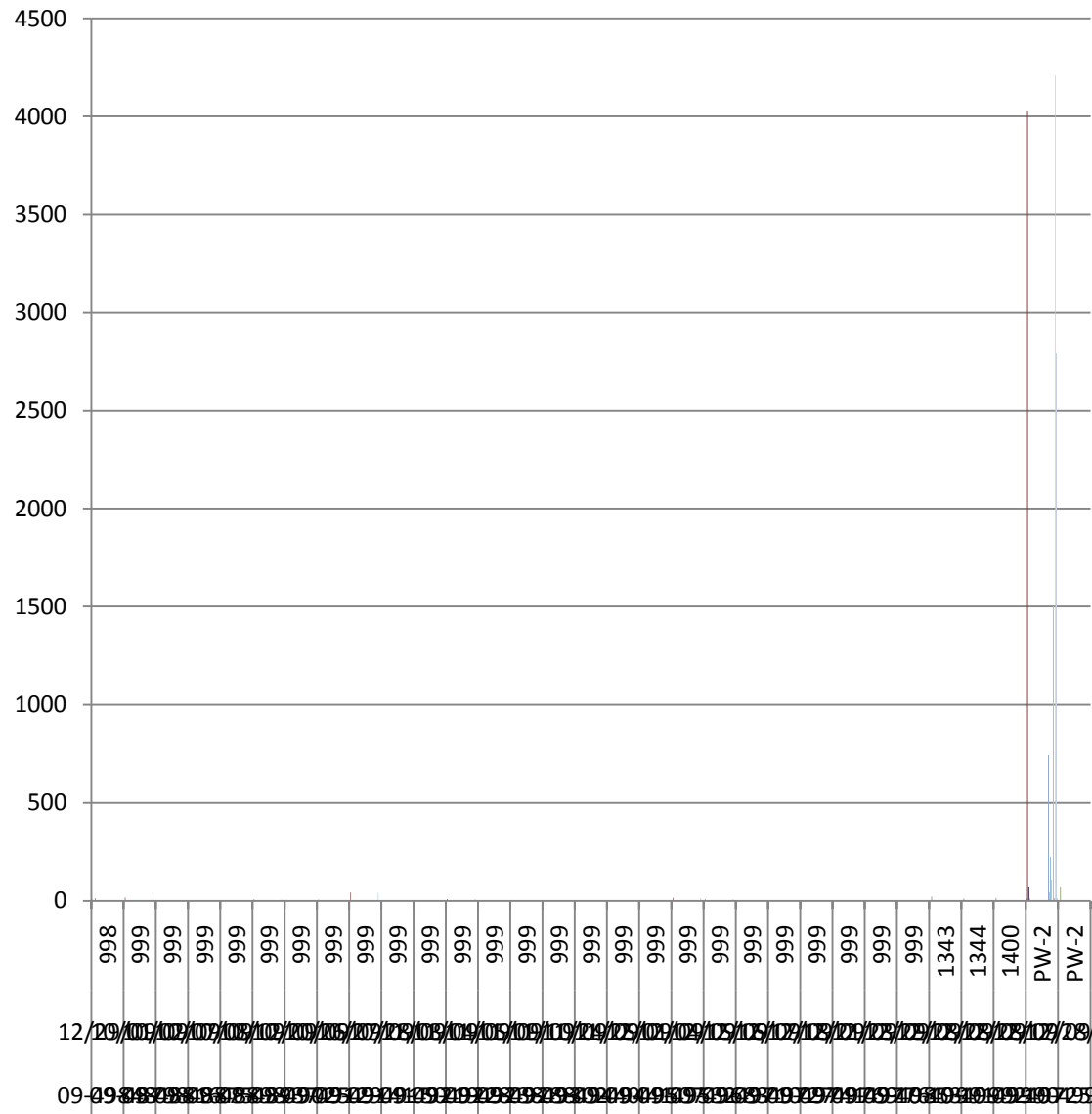
Lab#	Sample		MAJOR IONS									LAB MEASUREMENTS				
			Nadis	Kdis	Cadis	Mgdis	Cl	HCO3	CO3	SO4	NO3	LpH	LCond	Alk2	TDS	TSS
	Date	Loc.	mg/L	mg/L	mg/L	mg/L	mg/L	mg/L	mg/L	mg/L	mg/L	S.U.	µ S	mg/L	mg/L	mg/L
09-48816	10/02/09	999											3.6			
09-48875	10/07/09	999											3.2			
09-48898	10/08/09	999											2.7			
09-48937	10/12/09	999											7.8			
09-49025	10/20/09	999											4.1			
09-49129	10/26/09	999											5.7			
09-49141	10/27/09	999											41.6			
09-49150	10/28/09	999											4.2			
09-49219	11/03/09	999											2.3			
09-49228	11/04/09	999											9.6			
09-49238	11/05/09	999											4.8			
09-49288	11/09/09	999											4.1			
09-49302	11/10/09	999											5			
09-49440	11/24/09	999											2.5			
09-49441	11/25/09	999											3.2			
09-49507	12/01/09	999											2.4			
09-49532	12/04/09	999											12.36			
09-49683	12/15/09	999											7.9			
09-49710	12/16/09	999											3.7			
09-49727	12/17/09	999											2.4			
09-49741	12/18/09	999											2.3			
09-49769	12/21/09	999											2.5			
09-49776	12/23/09	999											2			
09-49853	12/29/09	999											1.2			
10-49991	12/28/09	1343														
10-49992	12/28/09	1344														
10-49990	12/28/09	1400														
09-49725	12/17/09	PW-2	740	6.9	42	<0.02	220	100	<5	1500	<0.56	12.5	4210	110	2790	11.1
10-49993	12/28/09	PW-2														

KEY

- N/A = No applicable
- NSFP = No sample - frozen pond
- NSW = No sample winterized
- NSNF = No sample; no flow
- NSPB = No sample; pump broke
- NSLW = No sample low water
- NSCU = No sample conditions uns:
- NSD = No sample dry
- NSNR = No sample no recovery



- FIELD PARAMETERS FpH S.U. NSLW 7.08 7.11 7.75
 7.64 7.02 8.11 7.04 NSD NSD 7.53 7.37 7.66 7.82 7.07
 7.38 7.93 7.72 7.82 7.4 7.54 7.75 7.93 7.75 8.12 8.73
 7.96 8.88 7.73 7.54 7.71 7.19 7.27 7.43 7.25 NSW
 7.47 NSW 7.75 7.41 8.07 7.38 7.73 7.3 NSW 7.32 7.92
 7
- FIELD PARAMETERS FCond μ S NSLW 10900 3550
 2510 570 2670 3140 2960 NSD NSD 450 590 6130
 1670 3430 1190 2650 1940 1940 2307 2360 2360
 1550 1707 1750 1480 1616 1590 2480 2540 2520
 2710 2766 2690 3380 NSW 630 NSW 650 2470 1920
 700 430 710 NSW 620 660 500 NSW
- FIELD PARAMETERS DTW feet 46.35 NSLW 15.67
 14.73 21.23 37.6 N/A 23.9 33.18 35.58 35.5 41.03
 35.54 NSD NSD 49.6 79 20.6 16.5 14.21 14.24 25.72
 26 28.92 29.5 43.7 44.66 52.9 48.69 45.19 41.13 41.2
 33.44 35.67 38.1 39.61 45.13 39.3 41.75 43.11 42.6
 36.2 39.6
- FIELD PARAMETERS DTW_RL feet 46.35 NSLW 14.55
 14.73 N/A N/A N/A 23.9 N/A 35.58 N/A N/A 35.54
 NSD NSD 49.6 79 N/A N/A 23.33 14.24 25.75 26 29.9
 29.5 39.21 44.66 37 48.69 34 41.13 N/A N/A N/A N/A
 39.61 N/A N/A N/A 43.11 N/A N/A N/A 40.86 41.4
 35.29 34.22 35
- FIELD PARAMETERS Temp $^{\circ}$ C 46.35 NSLW 15.6 14.73
 12.9 14.8 12.2 23.9 12.7 35.58 14 13 35.54 NSD NSD
 49.6 79 16.9 15.8 12.6 14.24 14.2 26 12.9 29.5 11.9
 44.66 12.3 48.69 15.3 41.13 14.5 15 14 13.7 39.61
 14.4 13.7 14.2 43.11 14.2 12.6 14.6 40.86 15.3 13.4
 14
- FIELD PARAMETERS FIRate CFS 46.35 NSLW N/A
 14.73 N/A N/A N/A 23.9 N/A 35.58 N/A N/A 35.54
 NSD NSD 49.6 79 N/A N/A N/A 14.24 N/A 26 N/A
 29.5 N/A 44.66 N/A 48.69 N/A 41.13 N/A N/A N/A
 N/A 39.61 N/A N/A N/A 43.11 N/A N/A N/A 40.86
 N/A N/A N/A 35 N/A N/A N/A



- FIELD PARAMETERS FpH S.U. NSLW 7.08 7.11 7.75
7.64 7.02 8.11 7.04 NSD NSD 7.53 7.37 7.66 7.82 7.07
7.38 7.93 7.72 7.82 7.4 7.54 7.75 7.93 7.75 8.12 8.73
7.96 8.88 7.73 7.54 7.71 7.19 7.27 7.43 7.25 NSW
7.47 NSW 7.75 7.41 8.07 7.38 7.73 7.3 NSW 7.32 7.92
7
- FIELD PARAMETERS FCond μ S NSLW 10900 3550
2510 570 2670 3140 2960 NSD NSD 450 590 6130
1670 3430 1190 2650 1940 1940 2307 2360 2360
1550 1707 1750 1480 1616 1590 2480 2540 2520
2710 2766 2690 3380 NSW 630 NSW 650 2470 1920
700 430 710 NSW 620 660 500 NSW
- FIELD PARAMETERS DTW feet 46.35 NSLW 15.67
14.73 21.23 37.6 N/A 23.9 33.18 35.58 35.5 41.03
35.54 NSD NSD 49.6 79 20.6 16.5 14.21 14.24 25.72
26 28.92 29.5 43.7 44.66 52.9 48.69 45.19 41.13 41.2
33.44 35.67 38.1 39.61 45.13 39.3 41.75 43.11 42.6
36.2 39.6
- FIELD PARAMETERS DTW_RL feet 46.35 NSLW 14.55
14.73 N/A N/A N/A 23.9 N/A 35.58 N/A N/A 35.54
NSD NSD 49.6 79 N/A N/A 23.33 14.24 25.75 26 29.9
29.5 39.21 44.66 37 48.69 34 41.13 N/A N/A N/A N/A
39.61 N/A N/A N/A 43.11 N/A N/A N/A 40.86 41.4
35.29 34.22 35
- FIELD PARAMETERS Temp $^{\circ}$ C 46.35 NSLW 15.6 14.73
12.9 14.8 12.2 23.9 12.7 35.58 14 13 35.54 NSD NSD
49.6 79 16.9 15.8 12.6 14.24 14.2 26 12.9 29.5 11.9
44.66 12.3 48.69 15.3 41.13 14.5 15 14 13.7 39.61
14.4 13.7 14.2 43.11 14.2 12.6 14.6 40.86 15.3 13.4
14
- FIELD PARAMETERS FIRate CFS 46.35 NSLW N/A
14.73 N/A N/A N/A 23.9 N/A 35.58 N/A N/A 35.54
NSD NSD 49.6 79 N/A N/A N/A 14.24 N/A 26 N/A
29.5 N/A 44.66 N/A 48.69 N/A 41.13 N/A N/A N/A
N/A 39.61 N/A N/A N/A 43.11 N/A N/A N/A 40.86
N/A N/A N/A 35 N/A N/A N/A

LOC.	Depth to Water (ft)	Date	Remarks
015A	42.17 @ 1000	10/22/2009	
015B	Dry @ 0958	10/22/2009	
009	32.92 @ 0924	10/22/2009	
014	37.00 @ 0926	10/22/2009	
024	25.75 @ 0850	10/22/2009	
337	38.35 @ 0947	10/22/2009	
338	31.69 @ 0951	10/22/2009	
336	41.23 @ 0907	10/22/2009	
802	40.60 @ 0840	10/22/2009	
803	39.75 @ 0858	10/22/2009	
804	24.32 @ 0903	10/22/2009	
805	23.65 @ 0939	10/22/2009	
806	41.10 @ 0912	10/22/2009	
036	42.00 @ 0701	10/22/2009	
035	28.12 @ 0655	10/22/2009	
368	30.15 @ 0752	10/22/2009	
348	22.53 @ 0748	10/22/2009	
037	42.68 @ 0834	10/22/2009	
038	34.18 @ 0706	10/22/2009	
C-1	37.15 @ 0824	10/22/2009	
039	41.14 @ 0831	10/22/2009	
040	45.34 @ 0828	10/22/2009	
041	42.63 @ 0825	10/22/2009	
042	40.15 @ 0844	10/22/2009	
043	41.90 @ 1005	10/22/2009	
342	35.00 @ 0956	10/22/2009	
050B	34.27 @ 0916	10/22/2009	
385	28.85 @ 0734	10/22/2009	
358	24.22 @ 0742	10/22/2009	
346	36.43 @ 0818	10/22/2009	
347	Dry	10/22/2009	
135	36.34 @ 0921	10/22/2009	